

December 2014
January 2015

Lalakoi Holiday Pages

Since 2000

www.lalakoidirectory.com



Tide Tables | Holiday Programmes | Area Map

Your
FREE
Holiday
Guide!



it's a way of life!

Your Shopping
Destination
this Summer



**Deep Sea
Adventures**
**The Ultimate
Fishing
Experience**

*Holiday Fun
for Everyone*

TOP SUID AFRIKAANSE
KUNSTENAARS IN AKSIE!



19 - 22 Desember

by die
GARDEN ROUTE CASINO

*It's Amazing,
Spectacular,
Awesome ...*
Tsitsikamma Falls Adventures



HOME

Advertise

Contact

Garden Route News

Special Offers

Website Design

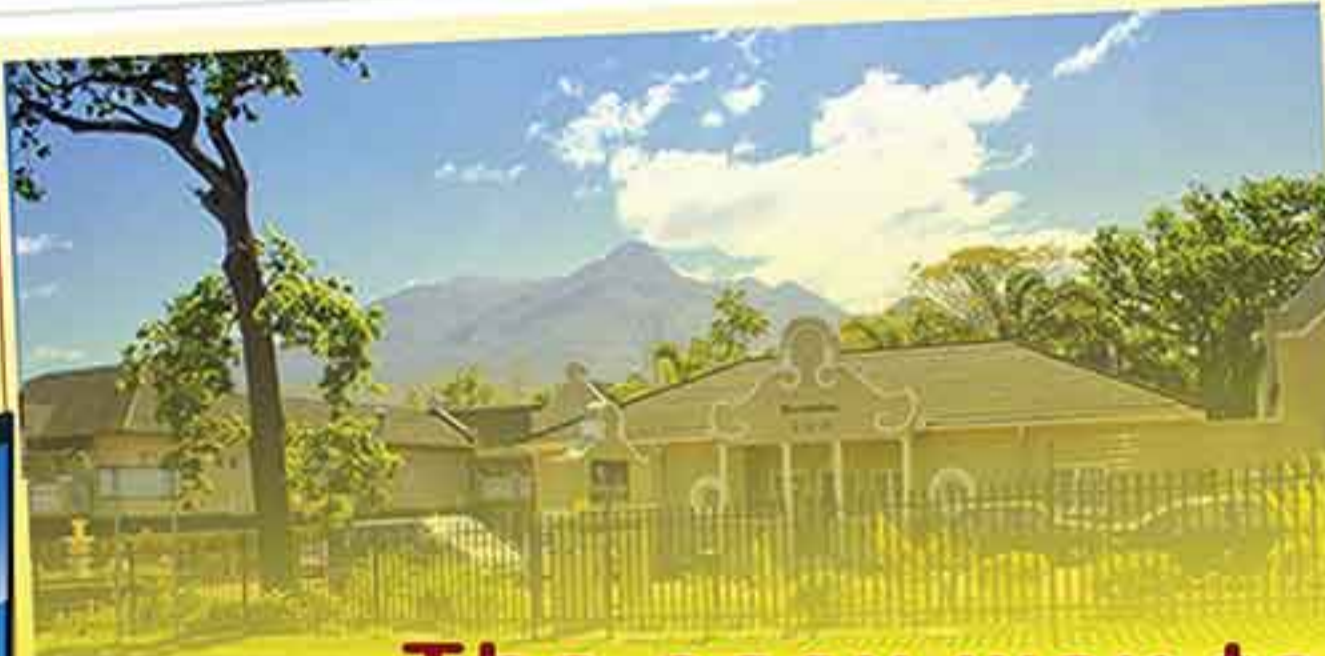
Login Register

Enter a keyword..

Advanced Search

Keyword

Search



Latest Special Offers

Find us on Facebook

follow us on twitter

Better Living

The easy way to find information on Businesses in the Garden Route and Klein Karoo

www.lalakoidirectory.com

Online Directory

for **ALL** Businesses in the Garden Route & Klein Karoo

-  • Accommodation
-  • Things to do & Places to Visit
-  • Dining Out
-  • Venues
-  • Tours & Transport
-  • Businesses

Christmas



December Holidays Extended Trading Hours

15 Dec to 2 Jan (8:30am – 7pm)

Excluding

16, 21 & 24 December	8:30am - 6pm
25 December	(Selected Trade)
26 & 28 December	9am to 5pm
1 January	9am - 3pm



Tel: 044 887 0044

www.gardenroutemall.co.za


GARDEN ROUTE
MALL

Lalakoi - Holiday Pages

December 2014 - January 2015



Contents

What's on in Mossel Bay this Summer...	Pg 4 - 5
What's on in George this Summer.....	Pg 6
What's on in Knysna this Summer.....	Pg 7
Emergency Numbers	Pg 8
Tours & Transport.....	Pg 10
Swellendam.....	Pg 10
Heidelberg.....	Pg 10
Malagas.....	Pg 10 - 11
Witsand.....	Pg 11
Riversdale.....	Pg 11
Still Bay.....	Pg 11
Jongensfontein	Pg 11
Albertinia.....	Pg 11
Vlees Bay.....	Pg 11
Herbertsdale.....	Pg 12
Mossel Bay.....	Pg 12 - 21
Hartenbos.....	Pg 24 - 25
Little Brak River.....	Pg 25 - 26
Great Brak River.....	Pg 26 - 28
Herold's Bay.....	Pg 28
George.....	Pg 28 - 36
Victoria Bay.....	Pg 36
Wilderness.....	Pg 36
Sedgefield.....	Pg 36
Knysna.....	Pg 37 - 38
Plettenberg Bay.....	Pg 38
Tsitsikamma / Storms River.....	Pg 39 - 40
Oudtshoorn.....	Pg 41 - 42
Calitzdorp.....	Pg 42
Ladismith.....	Pg 42
Barrydale.....	Pg 42
Montagu.....	Pg 42
Robertson.....	Pg 42
Tide Tables.....	Pg 43 - 45
Map.....	Pg 22 - 23

Using This Guide

To make this guide easy to use we have arranged the information by town in a route format. Start in Swellendam and travel along the coastal N2 route towards Mossel Bay and Tsitsikamma. Travel from Oudtshoorn and along Route 62 to Robertson.

Accommodation: Rates / Tariffs

The first rate indicated is the lowest rate in the low season. The second rate is the highest rate in the peak season. Rates are per person per night sharing, except if otherwise indicated.

Although great care has been taken to ensure that the rates and information in this guide are correct, the publishers cannot be held responsible for any incorrect information. Rates displayed in this guide were correct at time of print, but may vary during the year.

Venue Key

- | | |
|----------------------|--------------------------|
| W Weddings | F Functions |
| C Conferences | K Kiddies Parties |

Publishers

Lalakoi Publishing
P.O. Box 10402, George, 6530
E-mail: admin@lalakoi.com
George Office: Tel No: 044 874 0326
Hartenbos Office: Tel No: 044 695 1559

Advertising

Wilma Coetzee
Tel No: 044 874 0326 Cell No: 082 449 6186
Christelle Kleynhans
Tel No: 044 695 1559 Cell No: 082 314 0450

www.lalakoi.com

Cover Photograph

Model: Christi Kleynhans
Photographer: Christelle Kleynhans



Please tell our advertisers that you found their information in the Lalakoi Holiday Pages.

No part of this publication may be re-produced by any means without the written permission of the publishers. Although every effort has been made to ensure accuracy, the publishers cannot be held responsible for any incorrect or outdated information. The opinions expressed and the views in the submissions in the publication are not necessarily those of the publishers. The publishers accept no liability for loss or damage in any form whatsoever arising from information or/and submissions in the publication, E&EO.

WHAT'S ON AT GARDEN ROUTE CASINO

BRAVO 19-22 Dec



19 Dec
Juanita Du Plessis
& Adam



20 Dec
Theuns Jordaan &
Andriette Norman



21 Dec
Emo Adams
& Blackbyrd



22 Dec
Die Campbells
& Manie Jackson



ROCCO DE VILLIERS

15 DEC • 20H00 • R80 PP



WATERSHED

23 DEC • 20H00 • R100 PP

WOLFGANG RIEBE

27 DEC • 20H00 • R80 PP



OLD YEARS EVE WITH N2 JAZZ BAND

31 DEC • 20H00 • R150 PP

PLUS DJ & PLATTERS



THOSE WERE THE DAYS

10 JAN • 20H00 • R80 PP

Book now at gardenroutecasino.co.za



GARDEN ROUTE

CASINO, HOTEL AND ENTERTAINMENT

What's on in Mossel Bay this Summer Holiday



Vrydag 19 Desember
Juanita Du Plessis & Adam

Saterdag 20 Desember
Theuns Jordaan & Andriette Norman

Sondag 21 Desember
Emo Adams & Blackbyrd

Maandag 22 Desember
Die Campbells & Manie Jackson

Feesgronde open
daagliks om 17:00
met heerlike
kos- en wynstalletjies
asook
vermaak deur
spesiale
voorprogramkunstenaars.

Hoofprogram vanaf 20:00

Slegs ongereserveerde sitplekke.

Toegang Slegs R70 per persoon
Kinders onder 6 gratis

Vir meer inligting besoek of kontak
die Garden Route Casino Inligtingstonbank.
Tel No: 044 606 7777

Kaartjies beskikbaar by Computicket.



Friday 5 December
Jesse Clegg
Time: 20:00 Cost: R100.00

Sunday 7 December
Jazz
Time: 18:00 Cost: Free

Sunday 14 December
Karaoke Jazz Finals Prize Giving
Time: 18:00 Cost: Free

Monday 15 December
Rocco De Villiers
Time: 20:00 Cost: R80

Tuesday 16 December
Casino's Birthday Surprises
Time: All Day Long

Tuesday 23 December
Watershed
Time: 20:00 Cost: R100

Saturday 27 December
Wolfgang Riebe Magic/Illusionist
Time: 20:00 Cost: R80

Wednesday 31 December
Old Years Eve with N2 Jazz Band
Plus DJ's and platters!
Time: 20:00 Cost: R150.00

Saturday 10 January
Those were the days
Time: 20:00 Cost: R80.00

Festive season photo memorabilia booth in
Casino foyer during the season!
T's & C's apply

Tickets available at the Garden Route Casino's
Guest Relations Desk
or contact us on Tel No: 044 606 7777

Book now at www.gardenroutecasino.co.za

Tickets available from Computicket.

What's on in Mossel Bay this Summer Holiday



it's a way of life!

13 December

Lillie van Liekieland and Santa will entertain kids at Langeberg Mall. As per a Mall tradition, Santa will be giving gifts to less fortunate kids so they too can know the true heart of Christmas. Long Ear the Langeberg Mall bunny might make an appearance as Santa's elf.
Time: From 10:00.

Christmas Gift Market with handmade gifts.

19-22 Dec

Bravo, now in its 12th year, has become the prime holiday entertainment for families in the Garden Route. The festival will take place from 19 – 22 December and include the following activities

Daily promotions at Langeberg Mall between 11:00 and 15:00

There will also be a singing competition running along side with the "Buitefees" program at the mall.
From 12:00

The Shows consist of a pre-show with Local Artists, Soap Stars & the kykNet's Kokkedore.

The line-up for the main shows is:

19 Dec 2014 – Juanita Du Plessis and Adam
20 Dec 2014 – Theuns Jordaan and Andriette Norman
21 Dec 2014 – Emo Adams and Blackbyrd
22 Dec 2014 – Die Campbells and Manie Jackson

Talent Competition

Take part in the BRAVO and Langeberg Mall Talent Competition and stand the chance to share the stage with the BRAVO Stars, Campbells and Manie Jackson, on 22 December.

Daily trials will be held at the Langeberg Mall. For more information contact centre management on 044 695 2880 or Olga on 044 698 1865

28 Dec

Helpnet Dinner and meet the stars of "Uitgevang die Movie"

There will be a viewing of the movie and get an opportunity to mingle with your favourite celebrities. For more information contact Olga on 044 698 1865

Gift Wrapping Service

A professional gift wrapping service in front of Clicks and Mr Price.

All proceeds will go towards the Cansa House in George

Tel: 044 695 2880

Louis Fourie Weg, Voorbaai, Mosselbaai
www.langebergmall.co.za



Mossel Bay Ford & Mazda

4 x 4 Training - 16 Dec 2014 till 4 Jan 2015

Specialized 4x4 Training in Vlees Bay in the comfort of your own vehicle

Only 8 vehicles per day Training Daily @ 3pm

Inquiries & Bookings Tian Stemmet 082 584 6647

17 & 18 Desember
by die
Mosselbaai Stadsaal

Tyd: 19:00 vir 19:30
Koste: R70 per persoon

Kaartjies beskikbaar by deure

Vir meer inligting kontak
082 500 2338



What's on in George this Summer Holiday



Sondag 14 Des - Valiant Swart – “n Sondagete met”
R80 – R175 (ete)

Woensdag 17 Des – Ray Dylan – Eksklusief
R80 – R120

Donderdag 18 Des – Chris Cameleon
R80 – R120

Vrydag 19 Des – Dozi
R80 – R120

Saterdag 20 Des – ADAM
R80 – R120

Maandag 22 Des – Lianie May & Ricus Nel
R80 – R120

Dinsdag 23 Des – Thys die Bosveldklong & Gaskunste-
naar
R80 – R120

Vrydag 26 Des – Opelugkonsert met Steve Hofmeyr,
Arno Jordaan, Karen Ferreira & meer.....
R150 – R350 (VIP)

Saterdag 27 Des – Simon & Garfunkel Tribute – Marcato
R60 – R100

Maandag 29 Des – Jakkie Louw
R60 – R100

Dinsdag 30 Des – Die Heuwels Fantasties
R80 – R150 (VIP)

Woensdag 31 Des – New Year's Party met Spitbraai &
Dans – Flashbacks
R150 – R250 (ete)

Vrydag 2 Jan – Bob Dylan & Leonard Cohan Tribute –
Koos vd Merwe
R60 – R100

Saterdag 3 Jan – Kitchen Jammin Blues Band (met
Schalk Joubert & Simon Orange)
R60 – R100

Heerlike Kos Beskikbaar
Familie Vriendelike Omgewing
Baie Bekostigbare Pryse • Bon Fire
Kaartjies Beskikbaar by Webtickets.co.za
Tel No: 044 871 0113



www.gardenroutemall.co.za

19 Dec to 24 Dec
Free Photo with Santa
and
Arts and Crafts Corner
10am to 2pm

Kiddies Shows

Klikkerland
19 Dec – 2:30pm

Lilly van Liekieland
20 Dec – 2:30pm

The Magic of Regardt Laubscher
22 Dec – 2:30pm

December Holidays Extended Trading Hours

15 December to 2 January
(8:30am to 7pm)

Excluding:
16, 21 & 24 December
8:30am – 6pm

25 December
(Selected Trade)

26 & 28 December
9am – 5pm

1 January
9am to 3pm

Tel No: 044 887 0044
www.gardenroutemall.co.za

What's on in Knysna this Summer Holiday



- 5 December - Tim Burnz
- 12 December - Andra
- 17 December - Bacchus Nel
- 18 December - Valiant Swart
- 19 December - Gerald Clarke
- 20 December - K-Ray and The Bird
- 21 December - Beukes and Delaney
- 22 December - Shyne
- 23 December - TBA
- 24 December - TBA
- 25 December - Closed
- 26 December - Sons of Settlers & Riders Connection (Ger)
- 27 December - TBA
- 29 December - Albert Frost
- 30 December - David Meulen
- 31 December (Open till 17:00)
- 1 January - Closed
- 2 January - Piet Botha and the Lyzyrd Kings

For more information, show times and costs
contact
Mitchell's Brewery on 044 382 4685

**You don't have
to be bored this
summer holiday!**

**THE GARDEN ROUTE
AND KLEIN KAROO
OFFER A WIDE RANGE OF
ACTIVITIES AND ATTRACTIONS
FOR YOUNG AND OLD,
ADVENTURERS AND SIGHTSEERS.**

- **Adventure Activities**
 - **Adrenalin Activities**
 - **Boat Trips**
 - **Child Friendly Activities**
 - **Family Activities**
 - **Ostrich Farms**
 - **Water Slides**
 - **Animal Encounters**
 - **Horse Riding**
 - **Quad Biking**
 - **Diving**
 - **Deep Sea Fishing**
 - **Wine Tastings**
- and more**

The choice is yours!

Emergency



Phone Numbers

Mossel Bay

Police: 044 606 2801
Fire Department: 044 691 3722
NSRI/ Sea Rescue: 082 990 5954
Emergency Medical & Rescue Services: 10177
Municipality: 044 606 5000
SPCA: 072 287 1761
Life Bayview Hospital: 044 691 3718
Provincial Hospital: 044 691 2011

George

Police: 044 803 4733/44
Fire Department: 044 805 5111 / 044 801 6301
NSRI/ Sea Rescue: 082 990 5955
Emergency Medical & Rescue Services: 10177
Municipality: 044 801 9111
SPCA: 044 878 1990
George Hospital: 044 802 4528
George Medi Clinic: 044 803 2000
George Geneva Clinic: 044 803 2000
Medical Doctors:
Walk in Dr.: 044 873 4399
Mediese Sentrum Apteek: 044 873 5752
Geneva Apteek: 044 871 2879 / 083 303 7895
24h Breakdown Services:
Anton's Auto Centre: 044 873 2033 / 071 527 0131

Knysna

Police: 044 302 6608/9
Fire Department: 044 302 8911
NSRI/ Sea Rescue: 082 990 5956
Emergency Medical & Rescue Services: 10177
Municipality: 044 302 8911
Life Knysna Private Hospital: 044 384 1083

Plettenberg Bay

Police: 044 501 1900 / 044 501 1907
Fire Department: 044 501 3230 / 044 533 5000
NSRI/ Sea Rescue: 082 990 5975
Emergency Medical & Rescue Services: 10177
Municipality: 044 501 3000 / 086 124 8686
Medi Clinic Plettenberg Bay: 044 501 5100

Oudtshoorn

Police: 044 203 9000 / 044 203 9022
Fire Department: 044 203 3000 / 044 203 3110
Emergency Medical & Rescue Services: 10177
Municipality: 044 203 3000 / 044 203 3121
SPCA: 044 203 3957 / 083 619 0470
Oudtshoorn Hospital: 044 203 7200
Medi Clinic Klein Karoo : 044 272 0111

www.lalakoidirectory.com

Your Online Business Directory

The easiest way to find information on businesses and tourism products in the Garden Route and Klein Karoo

Christmas



Holiday Fun for Everyone

Free Photo with Santa and Arts & Crafts Corner

19 – 24 December 10am – 2pm

Kiddies Shows

Klikkerland – 19 Dec 2:30pm

Lilly van Liekieland – 20 Dec 2:30pm

The Magic of Regardt Laubscher – 22 Dec 2:30pm



Tel: 044 887 0044

www.gardenroutemall.co.za

GARDEN ROUTE
MALL



SINCE 1996
MALAGAS HOTEL



Facilities at the Hotel include: Canoe & Small Motorboat Rental, Swimming Pool, Jungle Gym, Croquet, Volleyball, Darts, Pool Table, Restaurant and Bar.

BREEDE RIVER
HOUSEBOAT HIRE



Cruise 40km of the Breede River aboard a Self-catering liner. Ideal for fishing or birdwatching.

Family friendly hotel on the banks of the Breede River. Our Newly Renovated Superior Rooms will be available from July 2014.

Tel: 028 542 1049 | info@malagashotel.co.za | www.malagashotel.co.za | www.houseboathire.co.za

Accommodation

Hotels

Malagas Hotel
From R489 p.p Sharing
(Dinner, Bed & Breakfast)
Tel No: 028 542 1049

House Boats

Breede River House Boats
From R700 to R1 200 p. boat
Tel No: 028 542 1049

Venues

Malagas Hotel
Tel No: 028 542 1049
W C F

Witsand

Witsand/ Port Beaufort is situated at the mouth of the Breede River. It is the widest, most navigable river in South Africa and is rich in diverse species of fish and bird life.

Riversdale

Riversdale is nestled at the foot of the Sleeping Beauty mountain peak and is the floral paradise of the Garden Route. The town is situated on the N2 national road 300 km from Cape Town and is ideally located near seaside towns like Still Bay, Witsand and Gourits. Ideal for outdoor activities and viewing the floral kingdom.

Still Bay

Also known as the Bay of the Sleeping Beauty, this seaside town with white sandy beaches, a navigable river and a mild climate – is ideal for sunbathing, swimming, boating, snorkeling, diving, angling, surfing and deep sea fishing.

Jongensfontein

Jongensfontein is a seaside village only 10kms from Still Bay and offers sandy beaches, rocks, rock pools for safe swimming and excellent fishing spots.

Albertinia

Known for the abundance of aloes that grow in the district. Many other plant species can also be found here. This enchanting old-world town is centrally located to a number of outdoor activities. Various coastal towns with unspoilt beaches are close by.

Vlees Bay

The peaceful coastal paradise of Vlees Bay is situated a mere 35kms from Mossel Bay and offers visitors long stretched beaches, a safe swimming beach, fishing, whale watching and many more!



Mees gewilde kuierplek vir vriende en families in die Tuinroete, naby Vleesbaai.

Geniet heerlike Kontreikos, 'n uitgebreide wynlys en 'n gesellige atmosfeer.

IN SEISOEN daaglik oop vanaf 10H00 tot laat. Sondag slegs oop vir middagetes.

Kontak ons vir meer inligting.



Sel No: 076 190 3330
stoepsit@gmail.com | www.facebook.com/Stoepsit

Restaurants

Stoepsit Restaurant on the Vlees Bay / Boggoms Bay / Gouritsmond Road is a fully licensed restaurant offering a relaxed ambiance, good food and extensive wine list. Open every Sunday for Lunch. In Season – open daily from 10h00. Tel No: 076 190 3330

Venues

Stoepsit Restaurant & Venue
Tel No: 076 190 3330
W C F

Join Lalakoi on Facebook



facebook.com/gardenroutedirectory



- Taxi Service
- Shuttle Service
- Airport Shuttles
- Day Trips
- 24 Hour Service



044 874 6707

www.zeelietaxis.co.za

Tours & Transport

Zeelie Taxis in George offers a complete Taxi/cab, airport shuttle and transfer service. Established more than 25 years ago they are the preferred transport service for many. They operate 24/7 and offer a reliable, prompt and affordable service. Tel No: 044 874 6707

George Lodge Tours offers a Shuttle Service from the George Airport to George and the surrounding towns in a certified, air-conditioned Minibus. Day trip packages are also offered. Half and full day packages can be tailored to your specifications. Tel No: 044 874 6549

Contact **JFK Rentals** for reliable car hire. They offer from small sedans to SUV's and a 10 seater Quantum (with or without driver). Delivery in and within a 30km radius of George is free of charge. Delivery charges outside of this area apply. Tel No: 044 874 7099 / 082 785 8279

Swellendam

Swellendam is nestled at the foot of the Langeberg Mountains, on the N2 only 240km from both Cape Town & George. The perfect stop over or a base to explore the area from. The area is known for its rich history & scenic beauty.

Things to Do & Places to Visit

Wildebraam Liqueurs is situated in the largest Youngberry growing area in the country and produce unique Liqueurs and a range of jams, deli and chilli products. Visit them for free tasting year round & berry picking in season (mid Nov – end Dec). Mon-Fri: 8am - 5pm & Sat: 9am - 4pm & in Season Sun: 10am - 3pm. Tel No: 028 514 3132/ 082 380 2080

Restaurants & Coffee Shops

Café Oppi Stoep is a fully licensed restaurant where you can expect to find excellent food and prompt, friendly service. The aroma of coffee beans, freshly baked cakes and other mouthwatering dishes awaits you in the cozy setting amongst the oak trees in our garden. Tel No: 028 514 3745

Accommodation

B&B, Guest Houses & Lodges

African Shades Bed and Breakfast

From R300 p.p sharing
Tel No: 073 251 2914

Self Catering

Wildebraam Farm Cottages
From R240 to R295 p.p sharing
Tel No: 028 514 3132 / 082 380 2080

Heidelberg

Heidelberg is on the banks of the Duivenhoks River, next to the N2 highway. The ideal destination for the eco-tourist



LINK

The authority on selling businesses™

BUYING OR SELLING
A BUSINESS ?
in the Garden Route

Karen Dorfling | M: +27 83 226 9017
karend@linkbusiness.co.za | www.linkbusiness.co.za



BLUE CRANE FARM SHOP

Your stop along the N2 where you can enjoy the beauty of the surroundings and the warm hospitality.



Meet Pip the "Cheeky Chef" and try her famous quiches and other delicious treats!

- Coffee Shop / Restaurant
- Take Aways

- Fresh and Preserved Products
- Kiddies Menu & Play Area
- Imported International Fragrances

Open daily from 8am till 5pm

Simply delicious...



Tel: 028 722 2651 3km West of Heidelberg on the N2
www.lalakoidirectory.com/blue-crane-farmshop

interested in birding, exploring fynbos, forests, mountains, rivers, streams & fauna of the area.

Open daily from 8am to 5pm. Tel No: 028 722 2651

Things to Do & Places to Visit

The Blue Crane Farmshop is located 3km west of Heidelberg next to the N2. Here you can enjoy light meals and a large variety of home bakes in the welcoming farm atmosphere. Dried fruit, nuts, biltong, homemade jams and preserves are also available from the farm shop.

Malagas

Situated along one of the largest navigable rivers in South Africa, Malagas offer a river, bird & fish life and a variety of water sports. It's also known for its hand-drawn pontoon, the last in South Africa that carries traffic over the Breede River.

JAKKALSVLEI
PRIVATE CELLAR

NOW OPEN
New Tasting Hall

www.jakkalsvlei.co.za



TASTE *the Garden Route*

GPS Co-ordinates:
S33°59' 15.31
E21°43' 09.33



Tel: 028 735 2061 | Cell: 082 8224 131 | Fax: 086 5930 123 | info@jakkalsvlei.co.za | Mon - Fri: 09:30 - 17:00 | Sat 09:30 - 15:00 | Sun Closed

Herbertsdale

30km north of PetroSA near Mossel Bay lies the scenic village of Herbertsdale. The road runs through farming country and the fertile soil yields rich crops of lucerne and fruit. Award winning wines are also produced in this fertile area.

Things to Do & Places to Visit

Jakkalsvlei Private Cellar is situated near Herbertsdale – here winemaker Jantjie Jonker produces true Garden Route Wines. Spend the day and enjoy the tranquil atmosphere. Bring your own picnic basket or order a Cheese Platter with figs & olives. Tel No: 028 735 2061

Mossel Bay

Mossel Bay lies half way between Cape Town and Port Elizabeth. Bartolomeu Dias discovered the harbour town

in 1488. Mossel Bay has the second most moderate climate in the world second to Hawaii. Sun drenched north facing beaches, the scenic beauty and a multitude of activities and attractions make this a popular coastal holiday destination.

Things to Do & Places to Visit

The Garden Route Casino offers countless hours of gaming pleasure. Come and enjoy the newly upgraded casino providing 412 slot machines and 16 gaming tables. All for your gaming pleasure! Tel No: 044 606 7777

FantaSea @ The Point in Mossel Bay is the ultimate family entertainment centre with lots of activities and a Waffle Hut/Pancake Den serving light meals in the Garden Route. Tel No: 071 697 6941

INDALU
GAME RESERVE

MOSSEL BAY GARDEN ROUTE
+27 (0)82 990 3831
+27 (0)82 888 0577
info@indalu.co.za
www.indalu.co.za

ELEPHANT EXPERIENCE
Interaction & Safaris

Like us on Facebook

GPS : S34 10 788 E 021 48 318
N2 Herbertsdale/Cooper/Buisplaas turnoff

sandboard *the dragon*

longest Ride in SA

320m rides!

Mossel Bay

www.billeon.com

World Famous
082 971 1405

Join the **Romonza** for fun Seal Island trips and dolphin watching. Dolphins and Great White sharks are often sighted on trips. The Romonza is the only registered and permitted passenger boat in Mossel Bay to take you as close as 50 meters to watch the gentle giants of the ocean. Tel No: 044 690 3101

Enjoy a deep sea fishing trip with **Mossel Bay Deep Sea Adventures!** Up to 12 persons can be accommodated on a trip. All tackle and bait is supplied and all fish caught may be kept (subject to baglimits). Ideal for teambuilding. Tel No: 083 260 2222

Jakkalsvlei Private Cellar is situated near Herhertsdale – here winemaker Jantjie Jonker produces true Garden Route Wines. Spend the day and enjoy the tranquil atmosphere. Bring your own picnic basket or order a Cheese Platter with figs & olives. Tel No: 028 735 2061

At the **Bravo Lounge** in the Garden Route Casino you can relax in the sophisticated show bar and experience a large range of entertainment such as cabarets, comedy shows, live bands, Karaoke, mini-theatre, and extravaganza productions. The lounge also offers light meals and lip-smacking cocktails. Tel No: 044 606 7777

The **Langeberg Mall** offers a unique open air shopping and

dining out destination situated just off the N2 between Mossel Bay and Hartenbos. The variety of shops caters for all your shopping needs with national, specialty and service retailers. Tel No: 044 695 2880

Restaurants & Coffee Shops

The Red Lobster is a well known steak and seafood restaurant situated in the Langeberg Mall, Mossel Bay. We offer a wide variety of seafood cuisine and succulent steaks. Open for breakfast, lunch and dinner. Tel No: 044 695 3039

The Music Station and Cocktail Lounge is a fully licensed venue with live entertainment by Giovanni Divito and guests. The venue is situated at the Old Train Station in Church Street. We offer a licensed restaurant with seating for up to 50 persons and ample space outside for a marquee etc. Tel No: 044 690 3273 / 079 981 4216

OPPi Plaas in the Goods Shed is a cosy restaurant serving true value for money 'boerekos'. Come and enjoy scrumptious breakfasts, toasted sandwiches, burgers, pies, curries and lots more! Kiddies menu and outside play area with jungle gym available. Tel No: 044 690 4551 / 072 977 8875



Adventure Horse Safaris
Mossel Bay - Garden Route

www.adventurehorsesafaris.co.za

"an unforgettable outdoor experience on horseback"

Alta Mostert-Coetzer
Contact Alta Coetzer on 083 287 6861

FantaSea
The Point
Fun Park Extraordinaire

Fun Park
Putt-Putt
Kiddies Parties
Light Meals
Water Games
5D Cinema
Gelato Ice Cream

Tel No: 071 697 6941
Visit us at The Point, Mossel Bay

Romonza
boat trips

t: 044 690 3101
c: 082 701 9031

we offer:
Seal Island Trips Sunset Cruises
Ons praat ook Afrikaans

e: romonza@mweb.co.za

Red Lobster

The BEST Steak & Seafood Restaurant
044 695 3039 * Langeberg Mall, Mossel Bay

- Under New Management -



Salads - Tramezzinis
Sandwiches - Wraps
Steak Grills
Ocean Grills
Kiddies Menu

Red Lobster Mossel Bay

We are open daily from 9 till late for
Breakfast, Lunch & Dinner

www.redlobstermosselbay.co.za





milky LANE
AND CO.

Full of Feelgood

- Sunnydaes
- Whizzers
- Waffles
- Pancakes
- Milkshakes
- Colddrinks
- Warm & Fuzzies
- Icecream Cakes

044 690 3376

Bayview Centre
(next to the SuperSpar)
Cnr Louis & Marsh Street
Mosselbay



Restaurant & Pub

3 Powrie Street, Mossel Bay

071 699 2808

BEST RIBS IN TOWN!!!

Best deal in town

500G Ribs & Chips

+ Eisbein & Chips

All for only R130.00

**Combos - Seafood - Platters - Toasted Sandwiches
Burgers - Salads and lots more!**

DoughLightful is a brand new modern coffee shop with a twist situated in the heart of the Langeberg Mall in Mossel Bay. We offer a range of frozen dough products and delicious Illy, Italian coffee and treats. Tel No: 082 855 0949

Milky Lane Mossel Bay invites you to their delicious ice cream shop. Expect fun, yum and top quality soft serve which goes into a range of mouthwatering ice cream treats! Tel No: 044 690 3376

The Below The Lighthouse Restaurant at the Point Hotel is positioned magnificently on the rocks below the St Blaize Lighthouse. They serve sumptuous buffet breakfasts, lunches and dinners as well as light meals throughout the day. Open daily 07h00 till late. Tel No: 044 691 3512

Accommodation

Hotels

Point Hotel
Rates on Request
Tel No: 044 691 3512

Garden Court Mossel Bay
Price on request
Tel No: 044 693 2800

Self Catering

Villa Chanté
From R495 to R2 595 per unit
Tel No: 044 698 2160 / 082 802 1161

Venues

Point Hotel
Tel No: 044 691 3512
W C F

Garden Court Mossel Bay
Tel No: 044 693 2800
W C F

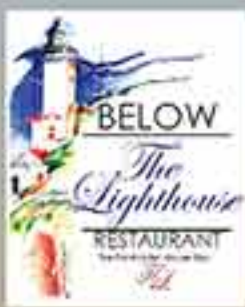
The Music Station & Cocktail Lounge
Tel No: 044 690 3273
W C F K

OPPi Plaas
Tel No: 044 690 4551 / 072 977 8875
F K

FantaSea @ The Point
Tel No: 071 697 6941
F K



Merry Christmas



Buffet Breakfast
 Daily Specials for Lunch
 Daily Set Menu Option for Dinner
 Diverse A La Carte Menu
 Children's Menu
 Extensive Wine List

Open daily from 07h00 until late
 Free Parking



MOSSEL BAY
the Point
 HOTEL ★★★★★

"Explore the Endless Horizon"



Stunning Views over
 the rocks and sea.
 Whale-watching Hotspot.
 Safe Swimming.

Tel: 044 691 3512

E-mail: thepoint@pointhotel.co.za

www.pointhotel.co.za

Point Road, The Point, Mossel Bay

TOUCAN

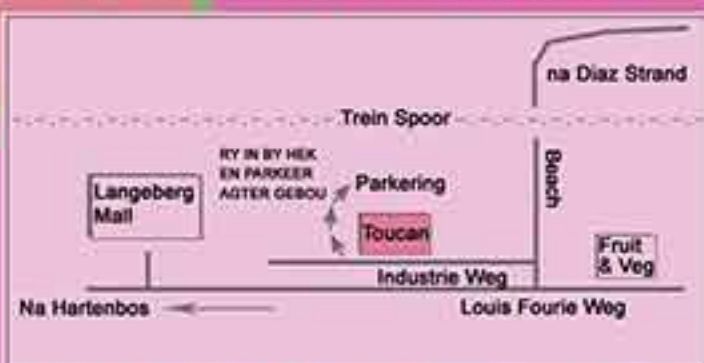
Materiaal & Wol

- Plastiese Kleedjies met motiewe (vir tafeldoeke)
- Bon - Bon & Spandex Materiaal (idaal vir strandrokkies)
- Hollandse Kant Gordyne
- Gordyn & stoffeermateriaal
- Groot verskeidenheid wol
- T-shirt balle (idaal vir badmatte strandsakke ens)
- Arts & Crafts en vele meer...



VOORDURENDE
 SPEZIALE AANBIEDINGE

Ook maar mens, ook maar moeg...
 Oop op 16 Desember van 9uur tot 12 uur.
 Sal gesluit wees vanaf 23/12/2014. Heropen 05/01/2015



Tel: 044 695 4063
 Industrieweg 29
 Voorbaai



Toucan Mat En Wol

Ure: Ma-Vr 9vm - 4nm Sat 9vm - 12nm

Snooker & Pool Supplies

Sales of New & Secondhand Pool Tables & Accessories

Specialising in:

- Retipping & Thinning of Cues
- Moving of Tables
- Servicing, Repairs and Recovering



Tel No: 044 695 2639 / 082 852 1454 / 072 447 8786
 4 Sioux Street, Voorbaai, Mossel Bay | snooker0010@yahoo.co.uk

Businesses

Coral Reef (Bait & Tackle Shop)
 Tel No: 079 203 8048 / 071 624 9300

Shopping

Langeberg Mall (Shopping Mall)
 Tel No: 044 695 2880

Oasis Water (Water Supplier)
 Tel No: 044 695 0150

Premier Land Safety & Chemicals
 Tel No: 044 695 2403

South Cape Lawnmowers
 Tel No: 044 692 0495

De Ville's Mens Outfitters (Men & School Clothing)
 Tel No: 044 690 3410

Vredebess Packaging
 Tel No: 044 695 1381

Toucan Materiaal & Wol (Material & Wool Shop)
Tel No: 044 695 4063

Snooker & Pool Supplies
Tel No: 044 695 2639 / 082 852 1454

CBS Fish Processors
Tel No: 044 692 0297

Mega Plastic
Tel No: 044 693 4411

The Goods Shed
Indoor Complex with individually owned small businesses offering you a unique shopping experience. Hours: In Season – Mon to Sat 9am to 6pm, Sun 9am to 6pm Out of Season – Tue to Sat 9am to 5pm. Sun closed
Address: T-junction of Bland and Mitchell Streets Mossel Bay

OPPi Plaas in the Goods Shed is a cosy restaurant serving true value for money 'boerekos'. Come and enjoy scrumptious breakfasts, toasted sandwiches, burgers, pies, curries and lots more! Kiddies menu and outside play area with jungle gym available. Tel No: 044 690 4551 / 072 977 8875

Fantastique
(Sterling Silver Jewellery)
Tel No: 072 447 0475

Boekie Hoekie
(Second Hand Bookshop)
Tel No: 072 447 0475

H & N Beekeepers
(Honey Supplier)
Tel No: 082 539 8445

Dazzle It
(Fashion Accessories & Beads)
Tel No: 082 416 1726

Services

Flower Box (Florist)
Tel No: 044 690 4439 / 072 308 7613

Moss Ink & Office Machines
Tel No: 044 691 3755 / 044 695 1299

BUSINESS CENTRE
Entrance 1, Shop 88
Langeberg Mall, Louis Fourie Rd
One-stop Communication Centre in Mossel Bay
Tel No: 044 695 4255



- Copies & Binding
- Wedding Invitations
- Web Design
- Laminating, Fax & Email
- Internet Café & Courier service
- Graphic Design
- Postal Services

Only **R99**

www.3at1mosselbay.co.za

Skorpions Security
Tel No: 081 309 7239

3@1 Mossel Bay
Tel No: 044 695 4255

Bonzai Management Services
(Bookkeeping and Project Management Services)
Tel No: 076 982 4144

Da Gama Laundry & Dry Cleaners
Tel No: 044 690 4747

Balloon Billies
(Balloon Decorist)
Tel No: 081 559 8477

Garden Route Debt Counselors
Tel No: 044 690 3782

Occasions by C
(Party Planners)
Tel No: 083 749 3050

Vredebest Trailer Hire
Tel No: 044 695 2258

Haas Das Satellite and Audio
Tel No: 044 690 5106

Vredebest Auctions
Tel No: 044 695 2258

Vredebest Removals & Storage
Tel No: 044 695 2258

Mojo Music School
(Music Lessons)
Tel No: 076 943 7264

occasions by c
PARTY BOUTIQUE & BAKERY



Cakes & Cupcakes
Partypacks • Balloons
Party Decor
Party Catering

083 749 3050
info@occasionsbyc.co.za

homemade pies • sandwiches
WOOD & ICE
cooldrinks • chips • ice cream
AIRTIME • LOTTO

bayview
Superette

Tel: 044 596 0559
Bertie Andersonstr, Bayview



d' VLEIS HUIS

Voorloper Singel Nr 17, Eenheid 2-3, Mossdustr
Didi: 083 461 4428
Ons lewer af in Hartenbos & Mosselbaai

Wors - Maalvleis - Goulash - Patties & Vele Meer

<p>CBS BEADS One-stop bead shop Visit us at The Goods Shed, Bland Street, Mossel Bay</p> 	<p>Dazzle It Funky Jewels Handbags Wallets Scarves, Gifts & lots more! Visit us at: The Goods Shed, Bland Street, Mossel Bay</p> 	<p>Enchanté - Ladies Boutique - Clothing, Shoes, Handbags & Accessories 69 Marsh Street, Mossel Bay</p>  <p>Exclusive Swimwear</p>
---	---	--

Contact us on 082 416 1726 or adrim@polka.co.za

Bottled Water, Ice, Fruit Juices, Sparkling Water & Flavoured Water.

Direct to the public and wholesale



oasis

Visit your nearest Oasis Water store today to stock up on the pure taste of "super-charged" oxygen rich Oasis Water and pay just R1.20 per litre when you visit us to refill.

MOSSEL BAY:
21B Mascador Street, Voorbaai
Tel No: 044 695 0151

OASIS EXPRESS:
Hartenbos Spar
Pick 'n Pay, Great Brak River

www.oasiswater.co.za



RELAX THIS SUMMER WITH OUR NEW OUTDOOR RANGE !

OUTDOOR | INDOOR | UPHOLSTERY | DECOR | HOSPITALITY | CUSTOM MADE FURNITURE



14 Sioux Str | Voorbaai | Mossel Bay | 044 606 6800 | www.objectfurniture.co.za

"50 Years of real estate
SUCCESS

makes us the obvious choice when
it comes to **buying** or **selling**."



Seeff

50th

ANNIVERSARY
1964 - 2014



**Reebok, Tergniet, Fraai-uitsig
Klein Brak River**
Annetjie - Cell No: 082 847 0251



Hartenbos Heuwels
Riana - Cell No: 082 318 4820



Hartenbos & Seemeupark
Pieter - Cell No: 082 555 6041



Pinnacle Point Golf Estate
Chantell - Cel No: 060 776 6426



Diaz Beach & Boland Park
Joey - Cell No: 082 806 9443



**Mossel Bay & Mossel Bay
Golf Estate**
Elizer - Cell No: 082 853 4603



**Danabai, Vleesbaai, Bog-
gomsbaai & Herbertsdale**
Blackie - Cell No: 076 011 2684



Heiderand
Patricia - Cell No: 083 306 5429

Office 1: 5 Point Rd, The Point, Mossel Bay | Office 2: 208 Flora Rd, Danabai
Office 1: 044 690 4477 A/H: 083 797 9312 | Office 2: 044 698 1219 A/H: 076 011 2684

IS DEBT AFFECTING YOUR

WORK, HEALTH AND RELATIONSHIPS?



PEACE OF MIND

Lee Lombard

NCRDC1196
Tel: 044 690 3782/7
Cell: 076 451 4329
Fax: 044 690 3824
Fax-to-email: 086 573 1601

info@grdebtcounsellors.co.za
www.grdebtcounsellors.co.za

ACT NOW TO ACHIEVE
FINANCIAL WELLNESS

美 Beauty @THE BAY

Tel No: 044 691 2817
Point Road, Mossel Bay

Bookings are essential

Christmas Vouchers Available

DAY SPA @ THE POINT, MOSSEL BAY offering quality beauty treatments & spa packages, massages, facials, spraytan etc.
• Cooltech - Fat Freeze Treatments available •
Extended Business Hours for December 2014 / January 2015



Visit us on: www.lalakoidirectory.com/beauty-at-the-bay

Da Gama Laundry & Dry Cleaners



Why worry about laundry when you are on holiday??
Let us handle your dirty washing & ironing for you!



Tel: 044 690 4747
15 Da Gama St, Mossel Bay



Partners @ Hair

We take hairdressing seriously
Point Road, Mossel Bay - Tel No: 044 690 4491



Mossel Bay Ford & Mazda

Tel No: 044 695 4393 | www.fordmosselbaai.co.za

Visit our Show Room & Service Centre at
Cnr Louis Fourie & Via Appie Street, Voorbaai, Mossel Bay



New Vehicles to expect for 2015



Specialized 4x4 Training in Vlees Bay in the comfort of your own vehicle

Only 8 vehicles per day
Training Daily @ 3pm

Inquiries & Bookings
Tian Stemmet
082 584 6647

4 x 4 Training

16 Dec 2014 till 4 Jan 2015

Health & Beauty

The Personal Trainer
Tel No: 072 982 4437

Zelexa Beauty Spa
Tel No: 044 692 0559

Medihope (Medical Supplies)
Tel No: 044 690 3172

Beauty @ The Bay (Day Spa)
Tel No: 044 691 2817

Partners @ Hair (Hair Salon)
Tel No: 044 690 4491

The Nail & Beauty Studio
Tel No: 082 449 1567

Motor Industry

Mossel Bay Ford & Mazda
Tel No: 044 695 4393

Motion Body Panels and
Windscreens
Tel No: 044 695 1823

Mossel Bay Toyota
Tel No: 044 606 5800

Mojo Car Sales
Tel No: 076 943 7264

Home Improvement & DIY

Blue Pearl Granite
Tel No: 044 695 1810

Big John (Handyman)
Tel No: 082 925 5266

On Tap Mossel Bay
Tel No: 044 695 0956

Van Eeden & Stander Bouers
Tel No: 082 571 5407 / 072 390 1484

Light City and Electrical
Tel No: 044 695 0063

Akula (Laminated Flooring)
Tel No: 079 494 0391

HC Interiors (Interior Designer)
Tel No: 082 457 7897

Best Fit Glass
Tel No: 044 695 0340

Vast Sure Services (Civil Engineer)
Tel No: 079 509 7349 044 695 0956

Vredebest

Auctioneers • Removals
Storage • Trailer Hire

Affordable Trailer Hire



Countrywide Removals



Auctioneers



We buy and sell

22 Industy Road, Voorbaai, Mossel Bay
Tel No: 044 695 2258
info@vredbestremovals.co.za



VREDEBEST

CLEANING SERVICES
WE'LL WAX WHILE YOU RELAX



Houses - Holiday Homes
Flats, Offices & Caravans
Contact Belinda 079 957 5224



VREDEBEST PACKAGING

www.vredbestpackaging.com



Packaging Material
Baking Supplies
Bottles
Containers
Cleaning Supplies
Plastic Bags
Gift Boxes
Decorations
Catering Supplies
Party Goods
and much more!



22 Industrial Road,
Voorbaai, Mossel Bay
Tel No: 044 695 1381
vredbest@lantic.net

Open to the public



VSS (PTY LTD)

VASTSURE SERVICES

GENERAL & BUILDING MAINTENANCE

Building Maintenance - Tiling - Painting
Paving - Renovating
Carpentry - Building Construction - Drainage Systems

Giving you assurance of quality service

Marius Van Staden
079 509 7349 / marius.vastsureservice@gmail.com



www.lalakoidirectory.com

Online Directory for ALL Businesses
in the Garden Route & Klein Karoo

- Accommodation
- Things to do & Places to Visit
- Dining Out
- Venues
- Tours & Transport
- Businesses

Looking for Self Catering Holiday Accommodation ?

- Private Family Homes
- Holiday Homes
- Garden Flats
- Apartments
and more



www.tuinroeteakkommodasie.com
www.gardenrouteaccommodation.co.za

Sterland Drama Studio saam met Dynamic Dance Studio
bied aan

Nedine Blom SUPERCOOL DIE MUSICAL

Musiekblyspel
vir die
HELE GESIN!



17 & 18 DESEMBER
MOSELBAAI STADSAAL
19:00 VIR 19:30 R70 PP

Kaartjies beskikbaar by deure | Vir meer inligting 082 500 2338

BIG JOHN NO JOB TOO SMALL! 



Handyman in the Mossel Bay Area

Handyman - Construction - Maintenance - Roofing
Gutters - Painting - Paving - Plumbing and more!!

Fridge & Appliance Repairs!



Fridges, stoves,
washing machines,
and other electrical
appliances!

Contact us on 082 9255 266
Email: john@big-john.co.za Website: www.lalakoidirectory.com/big-john



it's a way of life!

Your one stop sports,
restaurant, beauty,
fashion, décor,
business, gifts
and banking,
everything
you need,
Holiday
shopping
destination!

Mall Hours:

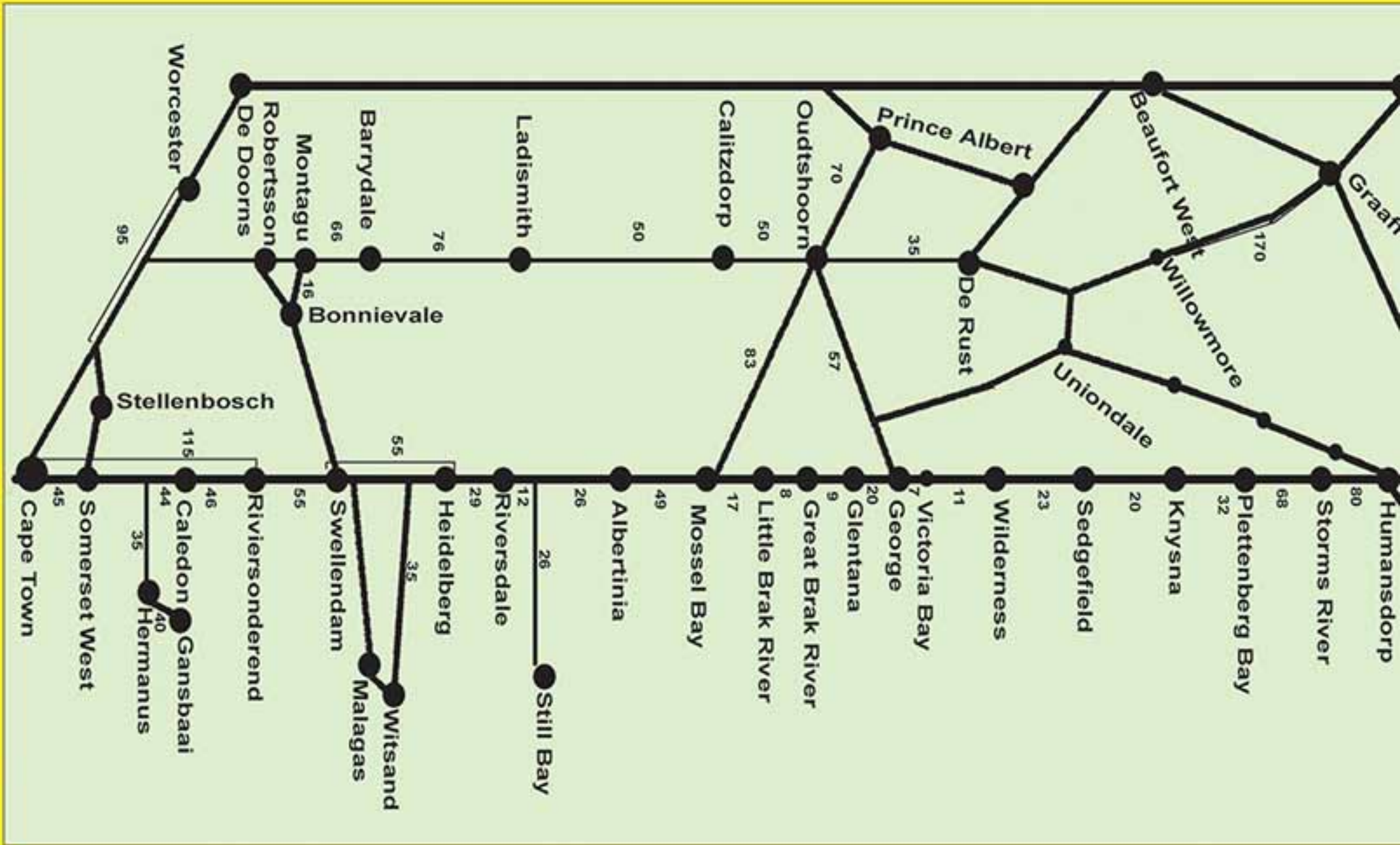
Mon– Fri: 09:00 to 18:00
Saturday: 09:00 to 17:00
Sunday: 09:00 to 14:00
Public Holidays: 09:00 to 14:00

Extended Mall Hours:

15-19 December
Mon– Fri: 08:00 to 18:00
20-24 December
Saturday: 08:00 to 19:00
Sunday: 09:00 to 17:00
Mon– Wed: 08:00 to 19:00

Contact Details:

Tel: 044 695 2880
or Tel: 044 698 1865
www.langebergmall.co.za





© Lalakoi Publishing



© Lalakoi Publishing

-  Accommodation
-  Things to Do
-  Dining Out
-  Venues
-  Businesses

Hartenbos

Hartenbos lies right next to Mossel Bay – white washed sandy beaches, calm seas and all year round mild Mediterranean weather make this seaside village a popular holiday destination.

Restaurants

The Driftwood Restaurant is situated in The Riviera Hotel, on the banks of the Hartenbos River. Enjoy meals from a-la-carte menu 7 days a week for breakfast lunch and dinner. Tel No: 044 695 1503

Die Boepensie is a restaurant and take away shop situated at 8 Kaap de Goede Hoop Avenue in Hartenbos. Here you can expect mouthwatering, good quality traditional 'boerekos' and excellent service. All meals can be enjoyed as take aways or sit down. Open 7 days a week. Tel No: 044 695 1723

Accommodation

B&B and Guest Houses

Die C-Skulp Bed & Breakfast
From R230 p.p sharing
Tel No: 044 695 4334 / 083 637 0367

Hotels

The Riviera Hotel
Price on request
Tel No: 044 695 1503

Self Catering

Seaview Lodge
From R350 to R1200 per unit
Tel No: 072 497 8008

Venues

The Riviera Hotel
Tel No: 044 695 1503
W C F

Businesses

Shopping

Bayview Slaghuis
Tel No: 044 695 0360

Pine Creations (Furniture)
Tel No: 044 695 4989

Arts & Crafts

Creative Hands (Craft Shop)
Tel No: 083 507 7891

Services

Strandloper Animal Clinic
(Veterinarian)
Tel No: 044 695 0729

Motor Industry

Gerber's Workshop
Tel No: 082 768 0264 / 076 991 8547

Health & Beauty

Hartenbos Optometrist
Tel No: 044 692 0247

Permanent Beauty
(Beauty Salon)
Tel No: 071 408 7072

Bio-Kinetics Hartenbos
(Gym & Bio-Kinetics)
Tel No: 044 695 2537

HARTENBOS SPORT

Love your Dream...

Tel: 044 695 0244

Besoek ons in die Spar Sentrum Hartenbos
Hengelgerei & Vars Aas
Kampeertoerusting
Strandbenodighede
Fietse & Sporttoerusting
Speelgoed
Hardeware

www.hartenbossportenhengel.co.za

Hartklop

letsie van Alles

Verskeidenheid Boeke

Geskenke vir oud & jonk

Strandbenodighede

Internet & Fakse

Speelgoed & Klerasie

Habby & Wol

Tel: 044 695 0244
Spar Sentrum, Hartenbos



Permanent Beauty

Kylie 071 408 7072
16 Swellendam Road
Hartenbos

Permanent Make Up

Eyebrows - R600
Eyeliner Top & Bottom - R600
Mucosal - R400
Full Lip and Liner - R1100



FACIALS
WAXING & TINTING
BODY TREATMENTS
NAILS AND LOTS MORE!!

Manicure or Pedicure with Gel R180

Creative Hands



Kaap de Goede Hooplaan, Hartenbos


Langs OK Minimark,
Regoor Laerskool Hartenbos



- Mosaiek
- Krале
- Decoupage
- Verf
- Scrapbooking
- Kunsbenodighede
- Plakkers
- Sand Art
- Piouterprodukte
- Quilling



Skakel gerus vir besonderhede oor klasse aangebied
Alencen Jabobs - Tel: 083 507 7891




Distance or reading lenses
Includes a Pepe Jeans fashion frame and thinner 1.56 HMC single vision reflection free stock lenses

All distance lenses (for far and near vision)
Includes a Pepe Jeans fashion frame and multifocal reflection free lenses (reduces glare for night driving)

NORMAL PRICE R2600
NOW R1699

NORMAL PRICE R5000
NOW R3499

Featured frames and gift are examples only. Terms and conditions apply. Promotion valid from 1 June 2014 while stocks last.



DYNAMIC VISION™
Optometrists
change the way the world sees you

Hartenbos Optometrist
Tel: 044 692 0247
Spar Complex, Kompanje Road,

BUTCHERY



SLAGHUIS

BAYVIEW Slaghuis

Roasts



**Gamon - Corned Meat - Roasts
Leg of Lamb - Steaks
Sosaties - Chicken - Turkey
Braai Packs
and lots more!**

Boerewors



Gamon



Trading Hours:
Mondays to Fridays 08h00 till 18h00
Saturdays 08h00 till 14h00

Tel No: 044 695 0360

Bayview Plaza,
Cnr Louis Fourie & Garret Street,
Voorbaai, Mossel Bay

Biltong



Personalized Kidz Clothing

PiKa Boo



Visit our online shop to order

www.pikaboo.co.za

Or contact Jeanette on 082 927 3726

Little Brak River

Little Brak River is a peaceful coastal village and it is situated approximately 10 minutes drive (15 km) from Mossel Bay. The Little Brak River teems with fish and is ideal for fishing, canoeing, boating and other watersport. The local long white beaches are suitable for swimming, rock and beach angling and for long walks.

Accommodation

Hotels

Eden Country Inn
From R180 to R265 p.p sharing
Tel No: 044 696 6262

Venues

Eden Country Inn
Tel No: 044 696 6262

W C F

Businesses

Shopping

HARTENBOS CARAVANS & OUTDOOR

AND REPAIRS

Now in
Little Brak River

ULTIMATE CAMPING EXPERIENCE

ferasmus61@gmail.com

- Second Hand Caravans For Sale
- Repairs and Service
- Camping Gear • Tent Repairs

17 1st Avenue, Little Brak River
Fanie: 082 701 8295 or 044 696 5907



THE NEL FAMILY
SINCE 1880
CALITZDORP

4 Dubbelgoud & 8 Goud
vir Boplaas
by Veritas & Michelangelo's 2014

BOPLAAS

Besoek ons gerus hierdie Desember:

Boplaas op die Plaas
(Calitzdorp proe lokaal)
Klein Karoo
Tel: 044 - 213 3326
www.boplaas.co.za

Boplaas by die See
(Klein-Brak proe lokaal)
Tuinroete
Tel: 044 - 696 5977

Cape Oysters

For The Best & Freshest Wild Oysters
Die Munro's

•Oyster Harvesters & Distributors

•Enjoy fresh wild Oysters in our rustic Oyster Tavern. The oysters will be opened right before your eyes!

BEST PRICES ON FIRE WOOD!

Tel: 044 696 6140
Old Main Road, Little Brak River

MID-BRAK DIY HARDEWARE



Besoek ons gerus vir al jou hardeware, verf visvanggerei, vars aas, tuingereedskap en vele meer!

Tel: 044 696 6062
58 Koedoelaan, Rheeboek



Oop reg deur die jaar, ideaal vir troues en funksies!
Sel: 079 339 0170
Besprekings noodsaaklik
www.devettemossel.co.za

Kom skop uit jou skoene, skink 'n wyntjie, tuur oor die strand en lê weg aan seekos vir 'n nasie!

Eet soveel jy wil - of kan!

Letterlik op die strand tussen Groot en Kleinbrak! Was ons nader aan die see, het jy natgespat!

2 Sessies daagliks: Middag: 12:00 - 15:00
(binne seisoen) Aand: 18:30 tot laat

Tariewe: R230 per volwassene
R100 per kind onder 12
R50 per voorskoolse kind
(Kreef is addisioneel teen R120 per heel kreef)

Geen Kroeg- bring jou eie drankies, glase en ys.
* Geen krediet kaart fasiliteite nie.

Cape Oysters

Buy fresh oysters harvested with legal permits from the ocean directly from the harvesters. Deliveries can be arranged. Braai wood also available.

Tel No: 044 696 6140

Address: Old Main Road

Restaurants & Coffee Shops

Enjoy seafood in abundance at the Beach Seafood Restaurant **De Vette Mossel**. For 3 hours you can feast on as much as you can eat! Bookings essential! Phone or SMS: 079 339 0170

The **De Dekke Restaurant** offers a popular a-la carte restaurant with ladies and sports bar as well as live entertainment. Here you can dance the night away and for the hungry the menu offers seafood, pizza, pastas and a variety of snacks. Tel No: 044 620 2531

Accommodation

B&B, Guest Houses & Lodges

Resting Palms B&B and Self Catering
From R260 p.p sharing
Tel No: 078 691 9794 / 073 694 3151

Self Catering

Dwarswegstrandoord
From R395 per unit
Tel No: 044 879 1010

Resting Palms B&B and Self Catering
From R900 to R1350 per unit (sleeps 4 to 6)
Tel No: 078 691 9794 / 073 694 3151

Camping

Pine Creek Holiday Resort
Price on Request
Tel No: 044 620 2434



DE DEKKE

Restaurant & Ladies Bar
Great Brak River, Western Cape

- Family Restaurant • Ladies Bar
- Live Entertainment • De Dekkaway

NEW / NUUT

- Nuwe Dek Kroeg en shooter kroeg nou beskikbaar.
- De Dekke Daiquiris nou beskikbaar.
- De Dekke now have their own Take-away, De Dekkaway. It is a traditional take-away right next to the restaurant.

December Trading Hours

Restaurant: 10am - 11pm Monday to Saturday
Sokkie / Dancing: From 7pm till late Monday to Saturday

Tel: 044 620 2531

Website: www.dedekke.co.za

Next to the N2 Great Brak Rivier off-ramp



Dwarswegstrandoord

From R120 per site
Tel No: 044 879 1010

Venues

De Dekke Restaurant
Tel No: 044 620 2531

C F

De Vette Mossel
Tel No: 079 339 0170

W C F

Businesses



Geskenk & Koffiewinkel

Besoek ons by
Kortstraat 1,
Groot Brakrivier



082 495 2031

Home Improvement, Building & DIY

Midbrak DIY

Tel No: 044 696 6062

Arts & Crafts

Jadem Arts & Crafts, Internet & Coffee Shop

Tel No: 076 798 6508

Great Brak River

The tranquil village of Great Brak River is situated on the N2 between George and Mossel Bay. This peaceful and scenic village is close to the many attractions and activities of the area and the ideal holiday destination for a relaxed holiday.

Things to Do & Places to Visit

De Dekke is known for the popular a-la carte restaurant with ladies and sports bar as well as regular live entertainment. Here you can enjoy various home cooked meals! Tel No: 044 620 2531

www.tuinroeteakkommodasie.com

**Afrikaanse Akkommodasie Webblad
vir die Tuinroete**

Privaat Huise

Hotelle

Gastehuisse

Kampeerterreine

Oorde

Selfsorg

en vele meer



www.tuinroeteakkommodasie.com

Shopping

Poppy Gift Shoppe
Tel No: 082 495 2031

Die Tuinhekkie Nursery
Tel No: 082 495 2031

Arts & Crafts

Periwinkle Crafts, Haberdashery & Jewellery
Tel No: 082 743 3089

Herold's Bay

Herold's Bay is only a few minute's drive from George – here you can play in the waves soak up the sun or explore and have fun in the tidal pool.

George

At the foothills of the majestic Outeniqua Mountains you are welcomed by George, the Administrative Capital of the Garden Route. Being the 6th oldest town in South Africa, George houses a number of gracious historical buildings that will take you back in time.

Things to Do & Places to Visit

The **Victoria Heights Animal and Reptile Park** is a family friendly attraction and houses a large variety of reptiles in their natural habitat and offers daily guided tours. The brave can interact and take a photograph holding one of the non-venomous snakes. Tel No: 044 889 0028

The **Garden Route Mall** offers a relaxed one-stop shopping experience with more than 120 shops including restaurants and movie theatres. There really is something for everyone! Conveniently situated at the confluence of the N2 highway and Knysna Road. Tel No: 044 887 0044

Happy Valley - Kids Play Centre offers a safe, fun and exciting indoor children's entertainment facility where children

aged 0 to 12 years can play in a supervised and stimulating environment. Hours: Tues - Sat: 9am to 5pm & Sun 9:30am to 3pm. Tel No: 084 567 8649 / 044 873 0046

The **George Golf Club** at the foot of the Outeniqua Mountains is a beautifully manicured 72 par, 18 hole course with beautiful mountain views from each hole. Visitors are welcome daily except on Wednesday and Saturday afternoons. Bookings essential. Tel No: 044 873 6116

Victoria Heights Supertube offers a family friendly activity where young and old can have hours of fun. A lovely garden with shaded areas is ideal for picnics, braai's or just to sit, relax and spending quality time with your family. Tel No: 044 889 0028

Children will love the outdoor play area at **Robbie's Padstal**. This play park offers trampolines, swings, a jungle gym, slides, wooden ponies and aviaries. The Bungy Bouncer and Shongololo Train also provide great fun and excitement. Tel No: 044 876 0064 / 060 759 5225

Sports

The **George Golf Club** at the foot of the Outeniqua Mountains is a beautifully manicured 72 par, 18 hole course with beautiful mountain views from each hole. Visitors are welcome daily except on Wednesday and Saturday afternoons. Bookings essential. Tel No: 044 873 6116

Restaurants & Coffee Shops

Café Chinno's, a fully licensed coffee shop & restaurant at the St Georges Square offers a welcoming atmosphere where customers can relax and enjoy a mouth watering breakfast, brunch or lunch and freshly baked sweet treats. Tel No: 044 871 2358



Victoria Heights Animal & Reptile Park

Unforgettable Experiences

Huge Tortoises & Anacondas
GUIDED TOURS

Picnic Facility & Birthday Party Venue

Open from 09h30 - 17h00
7 days a week

044 889 0028 • 082 972 2232

On N2 direction Wilderness 2km from the Garden Route Mall

Take Memorable Holiday Pictures

Supertube



Cafe Chinno's

Continental Cafe & Coffee House



Café Chinno's is a fully licensed coffee shop in George where friends gather to enjoy good coffee and good food.

- Indoor & Outdoor Seating
- Take Aways

Tel: 044 871 2358

St. Georges Square, Knysna Road, George

**Trammezzi's | Burgers | Sandwiches | Salads | Pancakes | Wraps
Breakfast | Brunch | Lunch | Cakes | Muffins | Scones | Croissants**

Trish's Coffee Shop is a stylish and tranquil oasis where you can relax and refuel body, mind and soul. Enjoy the wholesome good food prepared with care and love to perfection and served with pride. Situated in the Pick 'n Pay Centre in Knysna Road. Tel No: 044 871 1453

Robbie's Padstal offers a fully licensed restaurant and coffee shop with gift shop and outdoor kiddies play area at the Outeniqua Palms Nursery on the Airport Road just outside of George. They serve all day breakfasts, light meals and sweet treats. Tel No: 044 876 0064 / 060 759 5225

Kafe Serefé offers superb South African Food with a Turkish flair and is known for the great ambience, excellent meat dishes, value for money offered and slick service! Voted Best Value for Money Culinary Experience in the Garden Route 2012. Tel No: 044 884 1012

Kontrei Padstal is a family friendly restaurant just outside of George at the Sasol Fueling Station on the N2. They offer a restaurant, outdoor kiddies play area and farm shop with gifts and treats. A place for friends and family to enjoy great food. Tel No: 044 889 0097

Parents can relax in the **coffee shop** at the children's entertainment centre, **Happy Valley**, in George while their children play in a safe and secure environment. The coffee shop overlooking the play area offers light meals, snacks and beverages. Tel No: 084 567 8649 / 044 873 0046





A Delightful dining Experience

Superb South African Food with a Turkish Flair

- Affordable Menu
- Comprehensive Wine List
- Great Ambience
- Private Functions
- Child Friendly
- Frequent Specials
- Live Entertainment
- Take Out
- Outside Seating
- Fire Place

Tel: 044 884 1012

60 Courtenay Street, George • (Above Van Rensburg Foods)



www.kafeserefe.co.za

George Lodge International

Tel : 044 874 6549
Address: 86 Davidson Road, George
Email: info@georgelodge.co.za
Website: www.georgelodge.co.za



Peak Season Rates – 9 Dec 2014 to 5 Jan 2015 – Breakfast Complimentary – Free wifi
From R400.00 pp sharing pn – Additional charges for kids
for more rates visit www.georgelodge.co.za/rates



KONTREI PADSTAL

- Koffie Winkel
- Restaurant
- Kinder Speel Area
- Geskenkwinkel

Kom Geniet
Karoo Gasvryheid!

Tel: 044 889 0097 Website: www.kontreipadstal.co.za
N2 Kraaibosch George by Sasol Vulstasie

Accommodation

B&B, Guest Houses & Lodges

Ambiante Guest House
From R275 p.p sharing
Tel No: 044 870 7469

George Lodge International
Price on request
Tel No: 044 874 6549

Bethel B&B and Self Catering
From R350 p.p sharing
Tel No: 083 245 3839

Self Catering

Bamboo Self Catering
From R250 per person
Tel No: 082 898 9752 / 072 588 1382

Bethel B&B and Self Catering
From R250 p.p sharing /R600 per unit sleeps 4
Tel No: 083 245 3839

George Country Resort
From R380 to R1000 per unit
Tel No: 044 889 0034 / 071 193 2802

Camping

George Country Resort
From R150 to R550 per site
Tel No: 044 889 0034 / 071 193 2802

Venues

George Lodge International
Tel No: 044 874 6549

C F



A stylish & tranquil oasis where you can relax and refuel body, mind & soul.

- Enjoy wholesome food prepared with love and served with pride
- Indoor and outdoor seating
- Outside kiddies play area



Tel: 044 871 1453
Pick n Pay Centre, Knysna Road, George

George Country Resort
Tel No: 044 889 0034 / 071 193 2802

C F

Kafe Serefe
Tel No: 044 884 1012

F

Kontrei Padstal
Tel No: 044 889 0097

F K

Victoria Heights Animal and Reptile Park
Tel No: 044 889 0028

K

Happy Valley - Kids Play Centre
Tel No: 084 567 8649 / 044 873 0046

F K

Robbie's Padstal
Tel No: 044 876 0064 / 060 759 5225

F K

Businesses

Shopping

South Cape Flowers
Tel No: 044 871 5033

Furnit Warehouse (Furniture Shop)
Tel No: 044 871 4587

Cameraland George
Tel No: 044 873 6580

The Wool Studio
Tel No: 044 873 5382



the **WOOL STUDIO**
...for all your wool & crochet requirements

**THE MOST EXCITING
KNITTING and CROCHET
SHOP
IN SOUTH AFRICA**



Tel & Fax: 044 873 5382
25 Market Street, George
www.thewoolstudio.co.za



Transform Electrical
"TRANSFORM, YOUR ELECTRICAL LINK!"

Over 5000
SABS Approved
Electrical Products!

Technical - Lighting - Wholesale
Transform Electrical is the Eastern Cape's leader in the Electrical Wholesale industry, with branches in Port Elizabeth, East London, King Williams Town and George

Transform George
Tel: 044 871 4241
Address: St Georges Square,
Knysna Road, George

Come see our
lighting showroom!
www.transform.co.za



Member of NetFlorist

**SOUTH CAPE
Flowers**

Weddings • Functions • Wholesale

Blooming Hours:
Monday to Friday: 08:00 to 17:00
Saturday: 08:00 to 13:00

Tel: 044 871 5033
66 Knysna Road, George

Furnit

WAREHOUSE

**Balau Outdoor Furniture,
Lounge, Bedroom &
Occasional Furniture**



Trading Hours
Mon - Fri: 09:00 - 17:00
Sat: 09:00 - 13:00

Tel: 044-871 4587
Watsonia Centre, 68 Knysna Road, George
sales@furnit.co.za www.furnit.co.za

Find it Save it @ Furnit
WAREHOUSE

BUSH LAPA

**& Steve Hofmeyr
& OPELUG KONSERT**

MUSIEKFEES

14 DES '14 - 3 JAN '15

HEROLDSBAAI - GEORGE



044 851 0113

Find us on:
facebook

14 DES	VALIANT SWART - "N SONDAGETE MET" (DOWN TO EARTH VENUE)	R 80 - R175 (ETE)
17 DES	RAY DYLAN - EKSKLUSIEF	R 80 - R120
18 DES	CHRIS CAMELEON	R 80 - R120
19 DES	DOZI	R 80 - R120
20 DES	ADAM	R 80 - R120
22 DES	LIANIE MAY & RICUS NEL	R 80 - R120
23 DES	THYS DIE BOSVELDKLONG & GASKUNSTENAAR	R 80 - R120
26 DES	OPELUGKONSERT MET STEVE HOFMEYR, ARNO JORDAAN, KAREN FERREIRA & MEER.....	R150 - R350 (VIP)
27 DES	SIMON & GARFUNKEL TRIBUTE - MARCATO	R 60 - R100
29 DES	JAKKIE LOUW	R 60 - R100
30 DES	DIE HEUWELS FANTASTIES	R 80 - R150 (VIP)
31 DES	NEW YEARS PARTY MET SPITBRAAI & DANS - FLASHBACKS	R150 - R250 (ETE)
02 JAN	BOB DYLAN & LEONARD COHAN TRIBUTE - KOOS VD MERWE	R 60 - R100
03 JAN	KITCHEN JAMMIN BLUES BAND (MET SCHALK JOUBERT & SIMON ORANGE)	R 60 - R100



Large format printing

DIGIFUSION PROTEA HOTELS



klipdrift

Wink yourself here

HB

HEROLDS BAY RESORT

- HEERLIKE KOS BESKIKBAAR • FAMILIE VRIENDELIKE OMGEWING •
- BEKOSTIGBARE PRYSE • BON FIRE •
- KAARTJIES BESKIKBAAR BY WEBTICKETS.CO.ZA •



Be Seen on the INTERNET



We can assist you with:

- Website Development
- Responsive Websites
- Graphic Design
- Copy Writing
- Search Engine Optimization (SEO)
- Business Marketing



Contact Us

044 695 1559

webdesign.lalakoi.com

Garden Route Mall

A relaxed one-stop shopping experience with more than 120 shops including restaurants and movie theatres. There really is something for everyone!

Tel No: 044 887 0044 Address: Confluence of N2 & Knysna Road

Fabric World

Fabric World supplies a wide variety of fabric and haberdashery. Big selection of fabrics, patterns, vileness, clear plastic and all needed notions.

Tel No: 044 874 7632 Address: Shop 9, George's Walk, 76 Market St

George Carpets and Curtains

Tel No: 044 874 3507

Sky Gas

(Gas Appliances & Refills)
Tel No: 044 873 0272

Eden Woonwaens

Tel No: 044 873 4806

Suid Kaap Seep (Supplier of Cleaning Materials)

Tel No: 044 873 6557

Redi-Pac (Packaging Materials)

Tel No: 044 871 4475

Loerie Bakery

Tel No: 044 873 3261

Transform Electrical

(Lighting & Electrical Suppliers)
Tel No: 044 871 4241

BEDS B' US

(Bed & Mattress Retailer)
Tel No: 044 871 0208

Die Bof Kwekery

Tel No: 078 232 4105

Kiddies Party & Gift Shop

Tel No: 044 874 6303

Mega Plastic

Tel No: 044 874 3990

Arms Tackle & Outdoorworld

Tel No: 044 873 2149

Dynamic Print Worx

(Corporate Gifts)
Tel No: 083 278 5049 / 044 870 8153

Diskonto Stationers

Tel No: 044 874 2262

Suid Kaap Fietse (Cycle Shop)

Tel No: 044 873 6386

Karoo Leather

Tel No: 082 851 5566

Babsi & The Sunflower Florist

Tel No: 044 874 5727

Cartridge Town

(Printers & Consumables)
Tel No: 044 873 2899

Bakers Palace

Tel No: 044 873 2320

Venison Man

(Venison Butchery)
Tel No: 082 410 0929

Suid-Kaap Seep

*Manufacturers, suppliers
& distributors of*

Top Quality

- Cleaning Materials
- Cleaning Accessories
- Toilet Paper

*to the domestic, business &
Industrial markets.*

Tel: 044 873 6557
43A Stockenström Street, George

SKY GAS and SERVICES



Registered Gas Installers

- Refills and Exchanges
- Installation and Maintenance
- Sales and Repairs of Gas Equipment and Appliances

Tel No: 044 873 0272
35 Market Street, George




altyd eerste · always first

Waarvoor het jy lus?

'n Sappige **STEAK** • Geurige **RIBBETJIES**
Liplekker **WORS** • Keurige **KERSKOS** • Vinnige
klaargaar **ONTHAALKOS** of vars **SNOEP BORDE**,
goeie wyn, kraakvars slaai, roosterkoek &
ander vars gebak en nog meer.



Vars PLAASLIKE, SMAAKLIKE VLEIS & VLEISPRODUKTE

BESOEK ONS BY **COURTENAYSTRAAT 60, GEORGE** • TEL: 044 874 2045 

PLAAS KOMBUIS

BOEREKOS PLATTERS BESKUIT

TEL: 076 402 6906

NO 109 MERRIMAN STREET, GEORGE

**Cakes • Pies • Bread • Platters • Cookies
Biscuits • Rusks • Milk Tarts • Hertsogies
Lemon Meringue • Serviettes and more**

Monday to Friday: 07:00 to 17:30
Saturday: 07:00 to 13:30

Tel No: 044 873 3261

**Loerie Centre,
122 Meade Street, George**



Fabric World

George - South Africa

Tel: 044 874 7632
Shop 9, George's Walk, Market Street, George
E-mail: info@fabricworld.biz

**Fabric World supplies a wide variety
of fabric and haberdashery.**



**Stockists of exclusive bridal and evening fabrics.
Big selection summer fabrics.
Patterns, vilenes, denim, clear plastic, batting, felt,
printed hessian and all needed notions.**



**Chrisitex fabric paint, beads, cross stitch kits,
tapestries, DMC embroidery threads etc**



EDEN WOONWAENS

www.edenwoonwaens.co.za

- ✓ Verkoop van alle woonwaens en motorhomes
- ✓ Kampeerwinkel met groot verskeidenheid
- ✓ Werkswinkel vir herstelwerk, dienste en ombouings
- ✓ Tent herstelwerk

- Fiamma Agentskap -

Eden Woonwaens vir al jou kampeer behoeftes.

CJ Langenhoven Str 10, George.....Tel No: (044) 873 4806



- Keys Cut
- Vehicles Opened
- Lock Repairs
- Safes
- Repair Broken Keys (Transponder Keys)

Tel: 044 873 5290

23B Hibernia Street, George

Arnold Stopforth Cell: 072 250 9477

Eden Grass Cutters

Professional, Reliable & Affordable

- Grass Cutting
- Tree Felling
- Landscaping
- Refuse Removal

in George and surroundings



082 400 3729



Let us do your laundry for you!!!

Household, Industrial and Hospitality... Nothing too big or too small.

Tel No: 044 874 6333 / 072 448 1993
No. 5 Parkwood Building, 57 York Street



044 871 3862 | T
044 871 3863 | F
george@3at1.co.za
nick@3at1.co.za
St. George's Sq
Knysna Road
GEORGE

INTERNET CAFE
SCAN & EMAIL
WORLD WIDE COURIER
COPY • PRINT • FAX
CANVAS PRINTING & MOUNTING
GRAPHIC DESIGN
RUBBER STAMPS
POSTBOX RENTAL
BUSINESS CARDS
WEDDING INVITATIONS
THEMED BIRTHDAY INVITATIONS

South Cape Hardware

Tel: 044 873 2231
62 Wellington Street

Building, Plumbing & Electrical Accessories

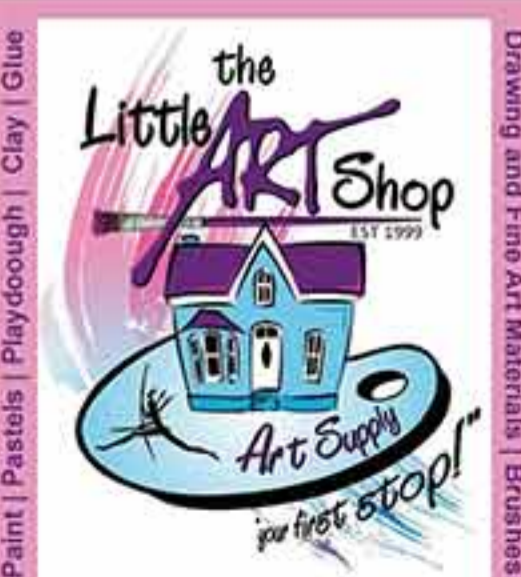
Tools - Garden Tools
Paint - Cement
and more...



YOUR DIY STORE

Open

Monday to Fridays - 07:30 to 18:00
Saturdays - 07:30 to 15:00



084 695 6871
Cnr Market & Hope Street, George
www.lalakoidirectory.com/the-little-art-shop

Services

George Locksmiths

Tel No: 044 873 5290 / 072 250 9477

Fast Way Couriers

Tel No: 072 016 5407

George Picture Framers

Tel No: 044 873 2880

3@1 George

Tel No: 044 871 3862

Queen Bee Party Hire

(Kiddies Party Rentals)

Tel No: 083 263 8310

LINK Business Brokers

Tel No: 083 226 9017

Eden Grass Cutters

Tel No: 082 400 3729

Leading Edge Signs

(Signage Company)

Tel No: 044 874 4778

Country Style

(Retail Distribution & Storage)

Tel No: 044 878 0312

Ruan van Aswegen - Financial Adviser

Tel No: 044 801 6415 / 072 137 7305

Finovo (Accountants)

Tel No: 044 884 1190

Freshwash Laundry

Tel No: 044 874 6333

Embroidery Wizard

Tel No: 044 874 7375

Bosco Automation Maintenance

Tel No: 073 235 1704

MortgageMax

(Property Finance)

Tel No: 082 800 1966

Top Tint (Window Tinting)

Tel No: 044 874 6303

Autowrap (Vehicle Wrapping)

Tel No: 044 874 6303

Trophies & Engraving

Tel No: 044 873 6743

Absolutely Perfect Water

Tel No: 044 873 6061

Zeelie Taxis

Tel No: 044 874 6707

JFK Rentals (Car Rental)

Tel No: 044 874 7099 / 082 785 8279

Home Improvement, Building & DIY

Best Fit Glass

Tel No: 044 874 2905

Robin's Nest Interiors

Tel No: 044 874 5336

South Cape Hardware

Tel No: 044 873 2231

Custom Decks and Walkways

(Solid wooden flooring)

Tel No: 082 588 6852

On Tap George

Tel No: 044 873 0340

JFK Wendy City

(Wendy House Manufacturers)

Tel No: 082 785 8279

PG Glass

Tel No: 044 802 9600

Garden Route TLB Hiring

Contact Garden Route TBL

Hiring for all your long and short

term TBL hire needs in the

Garden Route & surroundings.

Tel No: 083 417 6594 / 082 843

1792

Arts & Crafts

Art Supply/The Little Art Shop

Tel No: 084 695 6871

Crouse Art Gallery

Tel No: 044 887 0361 / 082 801

5167

Health & Beauty

Pink Ladies Hair and Beauty

Tel No: 044 873 3621 / 072 639

1902

Garden Route Hair & Beauty

Tel No: 044 871 5602

skinlogic

SMART SKIN CENTRE

Skinlogic Medical & Laser Centre provides an Exclusive & Professional Service to the discerning client which includes:

Laser Skin Rejuvenation

Dermal Fillers

Botox Treatments

Beauty Treatments

Body Contouring

Laser Liposuction

Weight-loss Programmes

Bio-Identical Hormone Treatments

Fibromyalgia Treatments

Needleless Mesotherapy

BOOK TODAY!

www.facebook.com/SkinlogicSA

38 CJ Langenhoven Road, George

Tel: 044 873 6558

Email: info@skinlogic.biz

www.skinlogic.biz



Finesse

Nails & Beauty

Just relax...

Permanent Make-Up
Needling
Bridal Make-Up
Gel & Acrylic Nail Overlays
Manicures & Pedicures
Eyelash Extensions
Facials - Massages - Waxing

Hours:
Weekdays: 09:00 - 17:00
Saturdays: 09:00 - 12:00
After Hours & Public Holidays:
only by appointment

Cell: 082 492 1310 Tel: 044 873 5763 19 Market Street, George

Better Living Health Shop

For All Your Health Products, Supplements and more



- Honey
- Soya Milk
- Molasses
- Malt
- Sutherlandia Herbs
- Seeds
- Nature's Choice Products
- Charcoal
- Fry's Products
- Green Tea
- Tea-s-me
- Woody Cape Coffee
- Soya Mince
- Soya Chunks
- Herbs
- Aloe Ferox Products

Get your ingredients for your "banting" diet from us!

Hours:
Monday to Friday 08:00 to 17:00

Tel No: 083 928 1699

Shop 11B Multi Centre, Market Street, George



Mediese Sentrum Apteek

Tel No: 044 873 5752
H/v York & Gloucester Laan, George

Ure:
Ma - Vry: 08h00 - 19h00
Sat: 08h30 - 13h00 & 16h30 - 20h00
Son / vakansie dae: 09h30 - 12h00 & 16h30 - 20h00

24 uur nood voorskrifte

Geneva Apteek Pharmacy

Johann Klue B.Pharm, M. Pharm, (MPS)

- Round the Clock Service
- 24 Hour Emergency Pharmacy

Closed on 25th December and 1st January

Tel: 044 871 2879 / 087 809 3714

Cell: 083 303 7895 (after hours)

Fax: 044 871 0633

Address: 106 Stander Street, George

Finesse Nails & Beauty
Tel No: 044 873 5763 / 082 492 1310

Better Living Health Shop
Tel No: 083 928 1699 / 044 873 3146

Walk in Doctor (Medical Doctors)
Tel No: 044 873 4399 / 044 887 0121

Cecile Steyn Physiotherapists
Tel No: 044 874 3396

Anton's Auto Centre



24h Breakdown Service

Tel: 044 873 2033 071 527 0131(24h)
3A Memorium Street, George

PSALM 91

Services
Tune-up
General Repairs
TO ALL MAKES OF VEHICLES

Skinlogic Smart Skin Centre
Tel No: 044 873 6558

Geneva Pharmacy
Tel No: 044 871 2879

Garden Route Hair Extensions
Tel No: 071 546 6227

Weldon Optical
Tel No: 044 874 2803

Mediese Sentrum Apteek
Tel No: 044 873 5752

Motor Industry

Anton's Auto Centre & Breakdown Service
Tel No: 044 873 2033 / 071 527 0131

Econo Tyres (Tyre Dealer & Fitment Center)
Tel No: 044 873 2378

Daihatsu Dealership George
Tel No: 044 878 2844

Kia Dealership George
Tel No: 044 878 2844

Hyundai Dealership George
Tel No: 044 878 1800

Powerflow Exhausts George
Tel No: 044 874 6303

Eden Quality Auto Parts
Tel No: 044 873 3628

Terry's Auto Clinic
Tel No: 044 873 0641 / 082 572 3582

Victoria Bay

Victoria Bay is only 9km from the George city centre. This beautiful bay is ideal for whale watching & dolphin watching, swimming, fishing and sunbathing on the sheltered grass area or on the white sandy beach.

Accommodation

Resorts

Victoria Bay Lodge
From R620 to R1 850 per unit
Tel No: 044 889 0032

Sea Glimpse Holiday Resort
From R460 to R2 400 per unit
Tel No: 044 889 0043

Wilderness

The picturesque coastal village of Wilderness, is situated only 17km from George along the N2. Wilderness is known for its long white sand beach, rivers, natural lakes and lagoons.

Things to Do & Places to Visit

The Views Spa offer beauty treatments designed to pamper and soothe. Experience the soothing waters of the Hydro Therapy Pool, thermal qualities of the Tylarium Sauna and Rasul Steam Room or relax in the tranquil surrounds of the Hydrotherapy Lounge. Tel No: 044 877 8010

Caroline's Chocolate Haven

COFFEE SHOP & GIFT SHOP

Join us for some delicious handmade Belgium Chocolates

Shop 8, Milkwood Village, Wilderness
Cell 083 446 7385 www.carolineschocolatehaven.com

SCARAB VILLAGE - SEDGEFIELD

Crafts
Art
Gifts
Cheese
Beads
Toys
Curios
Jewellery

- Licensed Bistro - Craft Beer Brewery
- Function & Wedding Venue
- Saturday Craft Market



Experience the spirit of the Garden Route

Located on the N2 Highway just outside of Sedgefield
Tel No: 044 343 2455 Website: www.scarabvillage.co.za

Restaurants

The elegant Views Restaurant is situated on a beach front dune on Wilderness beach. They serve buffet or a-la carte breakfasts, light-meals at lunch-time and a delectable dinner menu. Relax with after-work or pre-dinner drinks, enjoy the view. Tel No: 044 877 8000

Accommodation

Hotels

Views Boutique Hotel & Spa
Rates on Request
Tel No: 044 877 8000

Self Catering

Pirates Creek Resort
From R395 p.p sharing
Tel No: 044 877 1101

Arendsnes (2 - 6 pax)
From R450 to R800 per day
Tel No: 044 877 0471 / 083 231 0315

Venues

Views Boutique Hotel & Spa
Tel No: 044 877 8000

W C F

Sedgefield

Surrounded by the Indian Ocean, lakes and estuaries this is a peaceful paradise for relaxing! Outdoor and water sport enthusiast of all ages will find this the perfect destination! Opportunities are endless, from canoeing, skiing, surfing, windsurfing, fishing, diving, hiking and biking. The area is rich in birdlife, flora & fauna.

Businesses

Shopping

Wool 'n Things
Tel No: 044 343 1028

African Affair (Importers of lamps, furniture & décor)
Tel No: 044 343 1008

KNYSNA BREWERY TOURS AND TASTINGS OPEN DAILY FROM 10 A.M.



SOUTH AFRICA'S ORIGINAL CRAFT BREWERY



TOUR BOOKINGS ESSENTIAL - (044)382 4685
10 NEW STREET, KNYSNA, WATERFRONT PARK

BEER. NATURALLY

Knysna

Surrounded by indigenous forests, lakes, mountains and sea, this legendary town is a popular holiday destination. Besides catering for the nature lovers and adventurers Knysna also offers a shopper paradise.

Things to Do & Places to Visit

Garden Route Divers offers a range of diving courses. This includes scuba diving, one day passport diver program, boat diving charters, shore entry guided dives, snorkeling trips and more. Servicing of diving equipment and air fills also done. Tel No: 082 578 2758

Southern Comfort Western Horse Ranch offers you **Guided Quad Bike Forest Rides** on a natural and man-made obstacle course. Bring your own Quad or off-road bike and have fun! Tel No: 044 532 7885

Enjoy a forest horse ride, accompanied by experienced guides at Southern Comfort Western Horse Ranch. Beginners to experienced riders can enjoy the lovely Knysna forest from another angle, on horseback. Tel No: 044 532 7885

The Turbine Water Club offers activities on both land and the Knysna lagoon, including pontoon cruises, bicycle hire, kayak hire and more. They partnered with adventure companies to offer you the best Knysna experience at competitive prices. Tel No: 044 302 5751 / 072 259 7927

Restaurants & Coffee Shops

The **Col'Cacchio Pizzeria** is situated on the beautiful Thesen Islands. Here you can soak up the views of the Knysna lagoon while enjoying the signature range of crisp thin based pizzas, freshly prepared salads and pastas. Open daily from 11:00-23:00 Tel No: 044 302 5750



Customised Leisure Activities
Let us organise your holiday fun!

YOUR ONE STOP ACTIVITIES SHOP Thesen Islands



CRUISES • CAFÉ • KNYSNA LAGOON CRUISES

- | | |
|----------------------------------|---|
| 1. Lagoon Cruises | 2. Sunset Cruises |
| 3. Customised Year End Functions | 4. Bicycle Hire |
| 5. Kayak Hire | 6. Whale Watching |
| 7. Paragliding | 8. Guided Mountain Bike Tours |
| 9. Horseback Rides | 10. Lagoon Fishing Charters |
| 11. Scuba Diving | 12. FREE Knysna Seahorse Tours from our jetties (Only at very low tide) |

WHAT WE OFFER

Please come visit me in the office
(in front of The Turbine Hotel reception)
Schalk +27 (0)72 259 7927
waterclub@turbinehotel.co.za
for reservations



Accommodation

B&B, Guest Houses & Lodges

Adams Guest House
From R150 to R425 p.p sharing
Tel No: 082 898 8720

Hotels

The Lofts Boutique Hotel
From R520 to R1485 pp sharing
Tel No: 044 302 5710 / 044 302 5718

Premier Hotel, Knysna
Price on Request
Tel No: 044 302 7000

The Turbine Boutique Hotel
Price on Request
Tel No: 044 302 5745

Self Catering

191 Nirvana
From R350 to R425 p.p. sharing
Tel No: 084 826 2266

Premier Hotel
Price on Request
Tel No: 044 302 7000

Camping

Southern Comfort Western Horse Ranch
Rates on Request
Tel No: 044 532 7885

Backpackers

Southern Comfort Western Horse Ranch
Rates on Request
Tel No: 044 532 7885

Venues

Premier Hotel, Knysna
Tel No: 044 302 7000
W C F

The Lofts Boutique Hotel
Tel No: 044 302 5755
C

Southern Comfort Western Horse Ranch
Tel No: 044 532 7885
W F K



Garden Route Wolf Sanctuary



Businesses

Shopping

Mega Plastic
Tel No: 044 382 2867

Home Improvement, Building & DIY

Best Fit Glass
Tel No: 044 382 0682

Plettenberg Bay

One of the country's premier pleasure paradises. Lagoons, rivers and 18km of unspoilt beaches, surrounded by the Outeniqua and Tsitsikamma Mountains. Plettenberg Bay is home to the resident Orca and Bryde's Whales and large schools of dolphins.

Things to Do & Places to Visit

Ocean Safaris is a legally permitted boat based whale, dolphin and seal watching company. Close encounter whale watching tours and a variety of Dolphin discovery tours are offered. Private charters, specialised group tours also available on request. Tel No: 082 784 5729

The **Wolf Sanctuary** offers a fun-filled outing for the whole family. Stroll in park, feed the animals, learn about our wolves and relax in our garden. Light meals and soft drinks available! Carnivore feeding after 4.30pm. Tel No: 044 532 7539

Go on an unforgettable forest horse ride, accompanied by

experienced guides at Southern Comfort Western Horse Ranch. Beginners to experienced riders can enjoy the Knysna forest from another angle, on horse-back. Tel No: 044 532 7885

Southern Comfort Western Horse Ranch offers you **Guided Quad Bike Forest Rides**. Bring your own Quad or off-road bike and have fun! Tel No: 044 532 7885

Accommodation

Resorts

Plettenberg, A Forever Resort
From R600 to R1880 per unit
Tel No: 044 535 9309

Camping

Plettenberg, A Forever Resort
From R70 to R225 per person
Tel No: 044 535 9309

Southern Comfort Western Horse Ranch
Rates on Request
Tel No: 044 532 7885

Backpackers

Southern Comfort Western Horse Ranch
Rates on Request
Tel No: 044 532 7885

Venues

Plettenberg, A Forever Resort
Tel No: 044 535 9309

C

Southern Comfort Western Horse Ranch
Tel No: 044 532 7885

W F K

Garden Route Divers



- Scuba Diving Training from Scuba Diver to Instructor Level
- One day try scuba diving courses • Boat diving charters
- Shore entry guided dives • Snorkeling trips
- Dive Travel (Local & International)
- Air fills • Equipment service



We can offer more than 13 speciality courses & have over 10 years of professional diver experience.

Peet van der Westhuizen ☎ 082 578 2758

📧 info@gardenroutedivers.co.za • www.gardenroutedivers.co.za

Forest Horse Rides
Quad Bike Rides



Southern Comfort Western Horse Ranch

- Forest Horse Rides
- Quad Bike Rides
- Motorbike & Quad Tracks
- Sport Massage
- Camping
- Self Catering & Backpackers Accommodation
- Function Venue

• School Groups are welcome
Bookings Essential.
Directions:
Between Knysna & Plettenberg Bay, turn onto the Fisantehoek Road and drive for 2.8km.

Tel: 044 532 7885

Cell: 076 459 8662

Website: www.schranch.co.za



Tsitsikamma Falls Adventure



Phone: 082 578 1090 www.tsitsikammaadventure.co.za



BLOUKRANS BRIDGE

WORLD'S HIGHEST BUNGY BRIDGE - 216m

WALK IT JUMP IT FACE IT

**BOOK
ONLINE
NOW**

Photos & videos of each jump available.

Restaurant/ bar with live video feed of the jumpers in action.

Book online to secure a date and time for your jump.

Take a bungee tour onto the bridge to see the action up close.



FACE
ADRENALIN
faceadrenalin.com

Open 7 days
a week
042 - 281 1458

EXPERIENCE THE WONDERS OF THE INDIGENOUS FOREST ...
SUSPENDED 30 METRES ABOVE THE FOREST FLOOR

Tsitsikamma Canopy Tours

THE ORIGINAL CANOPY TOUR®
FIRST IN AFRICA



Tel: 042 2811 836 • adventure@gardenroute.co.za • www.stormsriver.com



American Style Diner with everything from Breakfast, Cakes and Milkshakes to all American Burgers, Dogs-with-a-Difference, Diner Style Desserts and Cocktails. Fully Licensed. Open Daily from 10h00



Tel: 042 281 1711 ext 267
Darnell Street,
Storms River Village, Tsitsikamma



Miss ELVIS 29 - 31 May 2015
Visit our website for info
www.elvisfestival.co.za

Quirky Pinneys Classic Newstyle RETRO

Tsitsikamma / Storms River

Along the southern coast of South Africa, bordering the Western Cape lies 40 000ha of forest coastline - Tsitsikamma! The name comes from a Khoi expression for 'place of abundant water'.

Things to Do & Places to Visit

A first in Africa - Tsitsikamma Tree Top Canopy Tours - Gently glide from platform to platform, 30 meters above the forest floor, with the enchanting Tsitsikamma Forest around you. Tel No: 042 281 1836

Woodcutters Journey - Journey down the old Stormsriver Pass and experience the indigenous forest from the comfort of a specially designed vehicle. Tel No: 042 281 1836

The Tsitsikamma Falls Adventures offer spectacular Zipline adventure slides across the Kruis River and abseiling in the wonderful surroundings of the beautiful Tsitsikamma. They operate in all weather conditions, 365 days a year. Tel No: 042 280 3770

Bloukrans Bungee operated by Face Adrenalin, is recognized by the Guinness World Records as the World's Highest Commercial Bungee Jump from a bridge at 216 meters above the Bloukrans River. Tel No: 042 281 1458

Tsitsikamma Mountain Trail - 2 - 6 day trail with optional equipment portage. Mountain scenery, lush forests, colourful fynbos and great swimming in the rivers & streams. Well equipped, rustic overnight accommodation with comfortable amenities. Bookings: 042 281 1712

Restaurants & Coffee Shops

Marilyn's 60's Diner, with 50's & 60's decor, Elvis & Marilyn memorabilia is like the classic diner of the movies! They serve everything from breakfast, cakes & milkshakes to All American Cocktails, Burgers, Dogs-with-a-Difference and Diner-Style Desserts. Tel No: 042 281 1711, ext. 267

The Tsitsikamma Village Inn is famous for its good food and old world charm. Enjoy a drink in the famous **Hunters Bar**, indulge in al fresco dining at **Café Bacchus** or select from the extensive a-la carte menu at our **De Oude Martha Restaurant**. Tel No: 042 281 1711

Accommodation

Hotels

Tsitsikamma Village Inn
From R350 to R665 p.p. sharing, breakfast included
Tel No: 042 281 1711

Venues

Tsitsikamma Village Inn
Tel No: 042 281 1711

C F



CANGO
WILDLIFE RANCH



Oudtshoorn South Africa

HAVE THE DAY OF YOUR LIFE!

Over **90** species of animals... and so much more!

OPEN 365 DAYS A YEAR!

www.cango.co.za - info@cango.co.za - 044 272 5593



OUTDUSHOORN
2km vanaf die Kango-grotte

VET FAMILIE PRET!
Toegang gratis!

NUWE WATERGLYBANE

KAMEELRITTE • RESTAURANT • AKKOMMODASIE

Wilgewandel
vakansieplaas

Tel: +27 (0) 44 272 0878
epos: info@wilgewandel.co.za
www.wilgewandel.co.za
[facebook.com/wilgewandel](https://www.facebook.com/wilgewandel)

©tripadvisor

CP NEL MUSEUM

Visiting Hours:
Mo - Fr: 08:00 - 17:00 Sat: 09:00 - 13:00
(Closed on Su and public holidays)

Tel No: 044 272 7306
3 Baron van Reede Street, Oudtshoorn

LE ROUX TOWN HOUSE

Visiting Hours:
Mo - Fr: 09:00 - 13:00 & 14:00 - 17:00
(Closed on Sa, Su and public holidays)

Tel No: 044 272 3676
146 High Street, Oudtshoorn

Bushman CURIOS

- Ostrich Leather, Egg & Feather Products
- Shoulder Mounts
- Antelope Skins
- Semiprecious Stone articles
- Gold Jewellery collections
- Gifts

Olga Minnie
078 107 2880

John Minnie
076 213 7530

Tel: 044 272 4497
curios@mweb.co.za
76 Baron van Reede Street, Oudtshoorn

CANGO OSTRICH SHOW FARM

ON ROUTE TO THE CANGO CAVES

Tel: 044 272 4623 www.cangoostrich.co.za
OPEN DAILY EXCEPT 25 DECEMBER

Oudtshoorn

The Ostrich Capital of the world is also known for the Klein Karoo Arts Festival held at the beginning of April. Oudtshoorn offers something for everyone, whether you are interested in the outdoors, adventure, shopping or bygone eras.

Things to Do & Places to Visit

When in Oudtshoorn visit The CP Nel Museum, one of the best small town museums. The museum's main theme is the ostrich industry, focusing on the ostrich feather boom period (1900 - 1914). Also visit Le Roux Town House Museum. Tel No: 044 272 7306

Cango Wildlife Ranch is home to over 90 species of animals and is open every day of the year! The ranch offers guided tours, restaurants, play parks and some of the world's most unique animal encounters opportunities. Tel No: 044 272 5593

Wilgewandel Holiday Farm offers activities such as Camel rides, rowing boats, water slides, donkey cart rides, a Gwarra – Gwarra golf course, quad buggies & animals to feed. The restaurant offers dishes like Ostrich steaks & traditional South African cuisine. Tel No: 044 272 0878

Restaurants & Coffee Shops

De Soete Inval Tea Garden is a true oasis, here you can relax and unwind in the shady gardens. Tantalizing tastes and sweet smells will instantly remind of your grandmother's country kitchen. Visit De Soete Inval at 145 High Street, Oudtshoorn. Tel No: 044 272 0071

The restaurant at **Wilgewandel Holiday Farm** offers dishes like Ostrich steaks & traditional South African cuisine. Various Activities for young and old as well as accommodation is available. Tel No: 044 272 0878

Accommodation

B&B, Guest Houses & Lodges

De Avond Rust
From R450 p.p sharing
Tel No: 044 272 0071

Wilgewandel Holiday Farm
(B&B/ Self catering)
From R240 to R290 p.p sharing
Tel No: 044 272 0878

Hotels

The Baron's Palace
From R300p.p sharing and
R445 single
Tel No: 044 279 1727

Guest Farms

Wilgewandel Holiday Farm
(B&B/ Self catering)
From R240 to R290 p.p sharing
Tel No: 044 272 0878

Resorts

Cango Mountain Resort
From R515 to R758 per chalet
Tel No: 044 272 4506

Kleinplaas Holiday Resort
Price on request
Tel No: 044 272 5811

Self Catering

Wilgewandel Holiday Farm
From R240 to R290 p.p sharing
Tel No: 044 272 0878

Kleinplaas Holiday Resort
Price on request
Tel No: 044 272 5811

Camping

Kleinplaas Holiday Resort
Price on request
Tel No: 044 272 5811

Cango Mountain Resort
From R174 to R208 per site
(max 4 pax)
Tel No: 044 272 4506

Venues

Cango Mountain Resort
Tel No: 044 272 4506

W C F

Wilgewandel Holiday Farm
Tel No: 044 272 0878

K

The Baron's Palace
Tel No: 044 279 1727

W C F

Kleinplaas Holiday Resort
Tel No: 044 272 5811

C F

De Soete Inval Tea Garden
Tel No: 044 272 0071

W C F

Businesses

Shopping

Mega Plastic
Tel No: 044 279 1019

Nciniba Ostrich Leather Products
Tel No: 079 823 6775

Home Improvement, Building & DIY

Best Fit Glass Oudtshoorn
Tel No : 044 272 5648

Calitzdorp

Calitzdorp, South Africa's Port Capital is situated on the Route 62, halfway between Cape Town and Port Elizabeth and only 50 km from Oudtshoorn. The town lies at the foot of the Huis River Pass and overlooks the Gamka River Valley. Calitzdorp enjoys a mild climate, especially in winter and its mineral rich spring waters are a great attraction.

Ladismith

Ladismith is well-known for its wine, fruit, cheese, beautiful surroundings, scenic hiking, mountain bike trails and the Towerkop Mountain. More than 180 species of birds have been recorded, a bird watchers paradise.

Businesses

Health & Beauty

Kapperkruid Health Shop
Kapperkruid stocks a wide range of herbal remedies, natural health care products, health foods & snacks as well as gluten free & stone ground flour, Home baked bread on Fridays. Books & DVD's on health, Christian & family life also available.
Tel No: 028 551 2193
Address: 38 Van Riebeeck Street

Barrydale

Nestled at the foot of the Langeberg Mountains between the fertile Tradouw Valley and the semi-arid Little Karoo, lies Barrydale on the famous Route 62. With the spectacular views, mountain passes, scenic walks, bird

watching & healthy country climate, you will fall in love with this romantic area!

Things to Do & Places to Visit

Visit the **Warmwaterberg Spa** and enjoy the tranquil atmosphere, wide open spaces, country hospitality and the healing powers of the hot mineral spring. The Lapa, restaurant, bar and deck is ideal for hosting functions. A Kiosk and various self catering accommodation options are available at the Spa. Tel No: 028 572 1609

Accommodation

Resorts

Warmwaterberg Spa
From R440 to R1040 per unit
Tel No: 028 572 1609

Camping

Warmwaterberg Spa (4 pax)
From R160 to R350 per site
Tel No: 028 572 1609

Venues

Warmwaterberg Spa
Tel No: 028 572 1609

W C F

Montagu

The Town Montagu, on Route 62 is situated half way between Cape Town and Oudtshoorn. A scenic two hour drive from Cape Town and approximately two hours from Oudtshoorn. Montagu offers a variety of outdoor activities. The town is home to many fascinating architectural and historical buildings.

Robertson

Robertson is the western gateway to Route 62 and also called the valley of Wine and Roses. It is a beautiful town with Victorian buildings, Roses and Jacaranda trees. Robertson offers tourists activities like hiking, biking, bird watching, swimming, river cruises and 4x4 routes to name just a few.

December 2014

Day	Sun		Hight Tides		Low Tide		Moon		Moon Phase
	Rises	Sets	Times	Times	Times	Times	Rises	Sets	
1	0513	1927	1139	---	0518	1814	1422	0142	
2	0513	1928	0011	1238	0629	1909	1526	0220	
3	0512	1929	0111	1328	0721	1955	1629	0300	
4	0512	1930	0201	1413	0805	2034	1731	0341	
5	0512	1930	0243	1454	0844	2110	1831	0425	
6	0512	1931	0323	1533	0920	2144	1928	0513	☉
7	0512	1932	0359	1610	0955	2217	2020	0603	
8	0512	1933	0434	1645	1028	2248	2108	0656	
9	0513	1933	0507	1719	1101	2319	2152	0750	
10	0513	1934	0540	1752	1135	2351	2231	0844	
11	0513	1935	0613	1825	1211	---	2307	0938	
12	0513	1935	0650	1903	0025	1252	2340	1032	
13	0513	1936	0733	1949	0103	1343	---	1125	☾
14	0514	1937	0832	2054	0150	1453	0012	1218	
15	0514	1937	0951	2228	0255	1633	0044	1312	
16	0514	1938	1113	2358	0430	1759	0116	1407	
17	0514	1939	1215	---	0556	1854	0150	1503	
18	0515	1939	0058	1304	0652	1937	0226	1601	
19	0515	1940	0144	1346	0737	2015	0307	1701	
20	0516	1940	0224	1427	0817	2052	0353	1802	●
21	0516	1941	0303	1509	0857	2130	0445	1901	
22	0517	1942	0342	1551	0938	2208	0542	1959	
23	0517	1942	0422	1633	1020	2247	0645	2051	
24	0518	1943	0504	1717	1104	2327	0751	2140	
25	0518	1943	0548	1802	1151	---	0858	2224	
26	0519	1943	0635	1848	0009	1241	1005	2305	
27	0519	1944	0727	1940	0052	1336	1111	2344	☾
28	0520	1944	0827	2041	0141	1441	1216	---	
29	0521	1945	0939	2201	0242	1607	1319	0022	
30	0521	1945	1059	2339	0418	1742	1422	0101	
31	0522	1945	1213	---	0603	1854	1523	0141	

The tides are for Mossel Bay. To calculate the tides for Knysna & Plettenberg Bay add 4 minutes.

January 2015

Day	Sun		Hight Tides		Low Tide		Moon		Moon Phase
	Rises	Sets	Times	Times	Times	Times	Rises	Sets	
1	0523	1946	0057	1313	0709	1946	1622	0223	
2	0524	1946	0152	1402	0758	2027	1719	0308	
3	0525	1946	0236	1445	0838	2102	1813	0357	
4	0525	1946	0314	1523	0913	2134	1902	0447	
5	0526	1946	0348	1558	0946	2204	1947	0540	☉
6	0527	1947	0420	1631	1016	2233	2028	0634	
7	0527	1947	0451	1702	1047	2302	2106	0729	
8	0528	1947	0521	1732	1118	2331	2140	0823	
9	0529	1947	0551	1802	1150	---	2213	0916	
10	0530	1947	0622	1834	0001	1225	2245	1009	
11	0531	1947	0657	1909	0034	1303	2316	1102	
12	0532	1947	0738	1953	0110	1350	2349	1156	☾
13	0532	1946	0832	2056	0154	1452	---	1250	
14	0533	1946	0946	2233	0259	1628	0023	1346	
15	0534	1946	1112	---	0440	1809	0101	1444	
16	0535	1946	0013	1226	0613	1912	0143	1543	
17	0536	1945	0118	1323	0714	1959	0230	1642	●
18	0537	1945	0206	1413	0803	2040	0324	1741	
19	0538	1945	0249	1459	0847	2120	0424	1836	
20	0539	1944	0331	1543	0931	2159	0529	1929	
21	0540	1944	0412	1626	1014	2238	0637	2016	
22	0541	1943	0454	1708	1057	2316	0747	2101	
23	0542	1943	0536	1750	1141	2355	0856	2142	
24	0543	1942	0620	1833	1226	---	1004	2223	
25	0544	1942	0705	1917	0034	1312	1110	2302	
26	0546	1941	0756	2007	0115	1404	1214	2342	
27	0547	1941	0857	2113	0203	1510	1317	---	
28	0548	1940	1018	2304	0316	1659	1417	0024	
29	0549	1939	1151	---	0542	1840	1514	0108	
30	0550	1938	0048	1303	0706	1939	1608	0155	
31	0551	1937	0147	1355	0756	2020	1659	0244	

Information supplied by the Hydrographer SA Navy. The Hydrographer is not responsible for any transcription errors. © Copyright by Hydrographer SA Navy.



ARM'S TAKE
OUTDOOR WORLD

Tel: 044 873 2149 | www.armstackle.co.za

Shop 10/11/12, Redefine Boulevard, York Street, George

Fishing Equipment & Accessories

- Rock & Surf
- Deep Sea
- Dropshot & Artificial
- Kayaks & Equipment
- Bass
- Fresh water
- Wetsuits & Quick Dry
- Fresh Bait

February 2015

Day	Sun		Hight Tides		Low Tide		Moon		Moon Phase
	Rises	Sets	Times	Times	Times	Times	Rises	Sets	
1	0552	1937	0229	1437	0834	2052	1745	0335	☉
2	0553	1936	0303	1512	0905	2120	1827	0428	☉
3	0554	1935	0334	1544	0934	2148	1905	0522	☉
4	0555	1934	0403	1614	1002	2214	1941	0616	☉
5	0556	1933	0431	1643	1030	2241	2015	0709	☉
6	0557	1933	0458	1711	1058	2308	2047	0803	☉
7	0558	1932	0526	1739	1128	2336	2118	0856	☉
8	0559	1931	0554	1807	1158	---	2150	0949	☉
9	0600	1930	0624	1838	0005	1230	2223	1042	☾
10	0601	1929	0658	1914	0036	1306	2259	1137	☾
11	0602	1928	0741	2001	0112	1351	2338	1232	☾
12	0603	1928	0839	2116	0201	1457	---	1329	☾
13	0603	1927	1005	2321	0323	1700	0021	1426	☾
14	0604	1926	1148	---	0532	1846	0110	1523	☾
15	0605	1925	0053	1304	0656	1942	0205	1619	☾
16	0606	1924	0148	1359	0751	2026	0306	1712	☾
17	0607	1923	0233	1447	0837	2106	0412	1802	☾
18	0608	1922	0315	1531	0920	2144	0521	1849	☾
19	0609	1921	0356	1612	1002	2221	0631	1933	☾
20	0610	1919	0437	1653	1043	2258	0742	2016	☾
21	0611	1918	0517	1733	1124	2334	0851	2057	☾
22	0612	1917	0558	1812	1205	---	0959	2139	☾
23	0613	1916	0640	1852	0011	1245	1105	2221	☾
24	0614	1914	0724	1936	0048	1328	1208	2306	☾
25	0615	1913	0816	2031	0130	1419	1308	2352	☾
26	0616	1912	0931	2221	0228	1544	1404	---	☾
27	0616	1911	1125	---	0527	1819	1456	0041	☾
28	0617	1910	0035	1250	0659	1925	1543	0132	☾

The tides are for Mossel Bay. To calculate the tides for Knysna & Plettenberg Bay add 4 minutes.

March 2015

Day	Sun		Hight Tides		Low Tide		Moon		Moon Phase
	Rises	Sets	Times	Times	Times	Times	Rises	Sets	
1	0618	1908	0134	1343	0748	2004	1626	0224	☾
2	0619	1907	0212	1422	0821	2033	1706	0317	☾
3	0620	1906	0244	1455	0850	2059	1742	0411	☾
4	0621	1904	0312	1525	0916	2125	1816	0504	☾
5	0622	1903	0340	1554	0943	2151	1849	0557	☾
6	0623	1902	0406	1622	1009	2217	1920	0650	☾
7	0623	1900	0433	1649	1037	2244	1952	0744	☾
8	0624	1859	0459	1716	1104	2311	2025	0837	☾
9	0625	1858	0526	1744	1132	2339	2100	0931	☾
10	0626	1857	0556	1814	1202	---	2137	1026	☾
11	0626	1856	0628	1848	0009	1235	2218	1121	☾
12	0627	1854	0708	1932	0044	1315	2304	1217	☾
13	0628	1853	0801	2040	0130	1412	2355	1313	☾
14	0629	1851	0922	2242	0246	1555	---	1407	☾
15	0629	1849	1119	---	0505	1818	0051	1500	☾
16	0630	1848	0028	1246	0640	1921	0152	1550	☾
17	0631	1847	0126	1344	0736	2006	0257	1637	☾
18	0632	1846	0212	1431	0822	2045	0405	1721	☾
19	0633	1845	0255	1514	0905	2123	0515	1804	☾
20	0634	1843	0335	1555	0945	2159	0625	1847	☾
21	0634	1842	0415	1634	1025	2236	0735	1929	☾
22	0635	1840	0455	1713	1103	2312	0844	2012	☾
23	0636	1838	0535	1752	1141	2349	0950	2058	☾
24	0637	1837	0615	1830	1219	---	1054	2145	☾
25	0638	1836	0656	1911	0026	1257	1154	2235	☾
26	0638	1834	0743	2001	0106	1341	1249	2326	☾
27	0639	1833	0848	2133	0201	1442	1339	---	☾
28	0640	1832	1044	2359	0449	1722	1424	0019	☾
29	0641	1831	1222	---	0635	1849	1505	0112	☾
30	0642	1830	0103	1317	0723	1932	1543	0206	☾
31	0642	1828	0143	1357	0756	2003	1617	0300	☾

Information supplied by the Hydrographer SA Navy. The Hydrographer is not responsible for any transcription errors. © Copyright by Hydrographer SA Navy.



OUTDOOR WORLD

Tel: 044 873 2149 | www.armstackle.co.za

Shop 10/11/12, Redefine Boulevard, York Street, George

Hunting Equipment & Accessories

- Firearms
- Telescopes
- Ammunition
- Rangefinders
- Reloading Equipment
- Binoculars
- Knives
- Camo Clothing

April 2015

Day	Sun		Hight Tides		Low Tide		Moon		Moon Phase
	Rises	Sets	Times	Times	Times	Times	Rises	Sets	
1	0643	1827	0215	1431	0825	2031	1650	0352	☉
2	0644	1826	0244	1501	0852	2058	1722	0445	☉
3	0644	1824	0311	1530	0919	2125	1754	0538	☉
4	0645	1823	0338	1558	0946	2152	1827	0632	☉
5	0646	1822	0405	1626	1013	2219	1901	0726	☉
6	0647	1820	0433	1654	1041	2248	1938	0821	☉
7	0647	1819	0501	1724	1110	2317	2018	0917	☉
8	0648	1818	0533	1756	1141	2350	2102	1013	☉
9	0649	1817	0608	1833	1215	---	2150	1108	☉
10	0649	1815	0649	1920	0029	1256	2244	1202	☉
11	0650	1814	0744	2028	0120	1352	2342	1254	☾
12	0651	1813	0903	2219	0237	1524	---	1343	☾
13	0651	1811	1054	2358	0447	1742	0043	1430	☾
14	0652	1810	1223	---	0619	1852	0148	1514	☾
15	0653	1809	0059	1322	0717	1940	0254	1556	☾
16	0654	1807	0147	1410	0803	2021	0402	1637	☾
17	0655	1806	0231	1454	0845	2100	0511	1718	☾
18	0655	1805	0312	1535	0925	2138	0619	1801	☾
19	0656	1804	0353	1615	1004	2215	0727	1846	☾
20	0657	1802	0433	1654	1042	2252	0834	1933	☾
21	0658	1801	0513	1733	1119	2330	0937	2023	☾
22	0658	1800	0553	1811	1155	---	1036	2115	☾
23	0659	1759	0633	1851	0008	1232	1130	2209	☾
24	0700	1758	0717	1938	0050	1312	1219	2303	☾
25	0701	1756	0812	2048	0143	1403	1302	2358	☾
26	0702	1755	0938	2249	0318	1528	1342	---	☾
27	0702	1754	1125	---	0536	1738	1418	0052	☾
28	0703	1753	0011	1234	0638	1842	1451	0145	☾
29	0704	1752	0059	1321	0719	1923	1523	0238	☾
30	0705	1752	0136	1359	0752	1956	1555	0331	☾

The tides are for Mossel Bay. To calculate the tides for Knysna & Plettenberg Bay add 4 minutes.

May 2015

Day	Sun		Hight Tides		Low Tide		Moon		Moon Phase
	Rises	Sets	Times	Times	Times	Times	Rises	Sets	
1	0705	1751	0208	1433	0823	2027	1627	0425	☉
2	0706	1750	0239	1503	0852	2056	1701	0519	☉
3	0707	1749	0308	1533	0921	2126	1737	0614	☉
4	0707	1748	0338	1604	0950	2156	1816	0710	☉
5	0708	1747	0408	1635	1021	2228	1859	0807	☉
6	0709	1746	0441	1708	1053	2302	1947	0903	☉
7	0710	1745	0517	1745	1127	2340	2039	1000	☉
8	0710	1744	0556	1826	1205	---	2136	1052	☉
9	0711	1743	0642	1917	0025	1249	2236	1142	☾
10	0712	1743	0738	2024	0121	1344	2339	1228	☾
11	0713	1742	0851	2156	0238	1503	---	1312	☾
12	0714	1741	1026	2323	0423	1657	0043	1353	☾
13	0714	1740	1152	---	0551	1817	0149	1433	☾
14	0715	1739	0028	1256	0652	1912	0254	1513	☾
15	0716	1738	0120	1349	0742	1957	0401	1554	☾
16	0716	1738	0207	1435	0826	2039	0508	1636	☾
17	0717	1737	0251	1518	0907	2119	0614	1721	☾
18	0718	1736	0333	1559	0946	2158	0719	1810	☾
19	0719	1736	0414	1638	1023	2236	0820	1901	☾
20	0719	1735	0454	1716	1059	2314	0918	1955	☾
21	0720	1734	0534	1754	1135	2353	1010	2051	☾
22	0721	1734	0612	1832	1210	---	1057	2146	☾
23	0722	1733	0652	1914	0033	1247	1138	2241	☾
24	0722	1733	0737	2005	0119	1330	1216	2336	☾
25	0723	1732	0835	2119	0220	1425	1251	---	☾
26	0724	1732	0957	2250	0349	1548	1324	0029	☾
27	0725	1731	1127	2359	0526	1727	1356	0123	☾
28	0725	1731	1233	---	0628	1831	1427	0216	☾
29	0726	1730	0048	1321	0713	1916	1500	0309	☾
30	0727	1730	0128	1401	0750	1954	1535	0404	☾
31	0727	1730	0204	1436	0824	2028	1613	0500	☾

Information supplied by the Hydrographer SA Navy. The Hydrographer is not responsible for any transcription errors. © Copyright by Hydrographer SA Navy.

Arms & Tackle

OUTDOORWORLD

Tel: 044 873 2149 | www.armstackle.co.za

Shop 10/11/12, Redefine Boulevard, York Street, George



Camping Equipment & Accessories

- Tents in all sizes
- Sleeping Bags
- Gazebos
- Gas Equipment
- Stretchers
- Camping Chairs
- Camping Accessories
- Leisure Equipment

Fishing Charters Diepsee Hengel



The Ultimate Fishing Experience

Come and enjoy a deepsea fishing trip
from the Mossel Bay Harbour
on one of our 26ft buttcats,
“NIKITA”, “DANKIE PA” or “DREAM CATCHER”.

BOOK NOW!!

Contact Magda
072 454 2988
083 260 2222



www.deepseaadventures.co.za